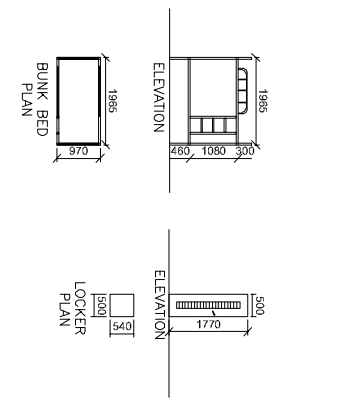
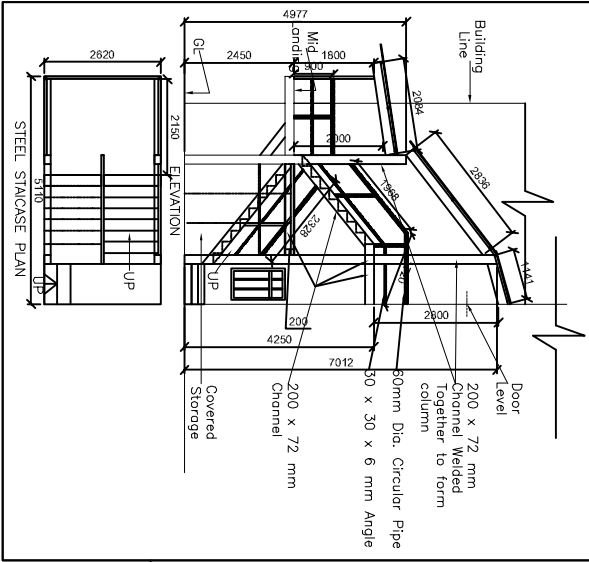
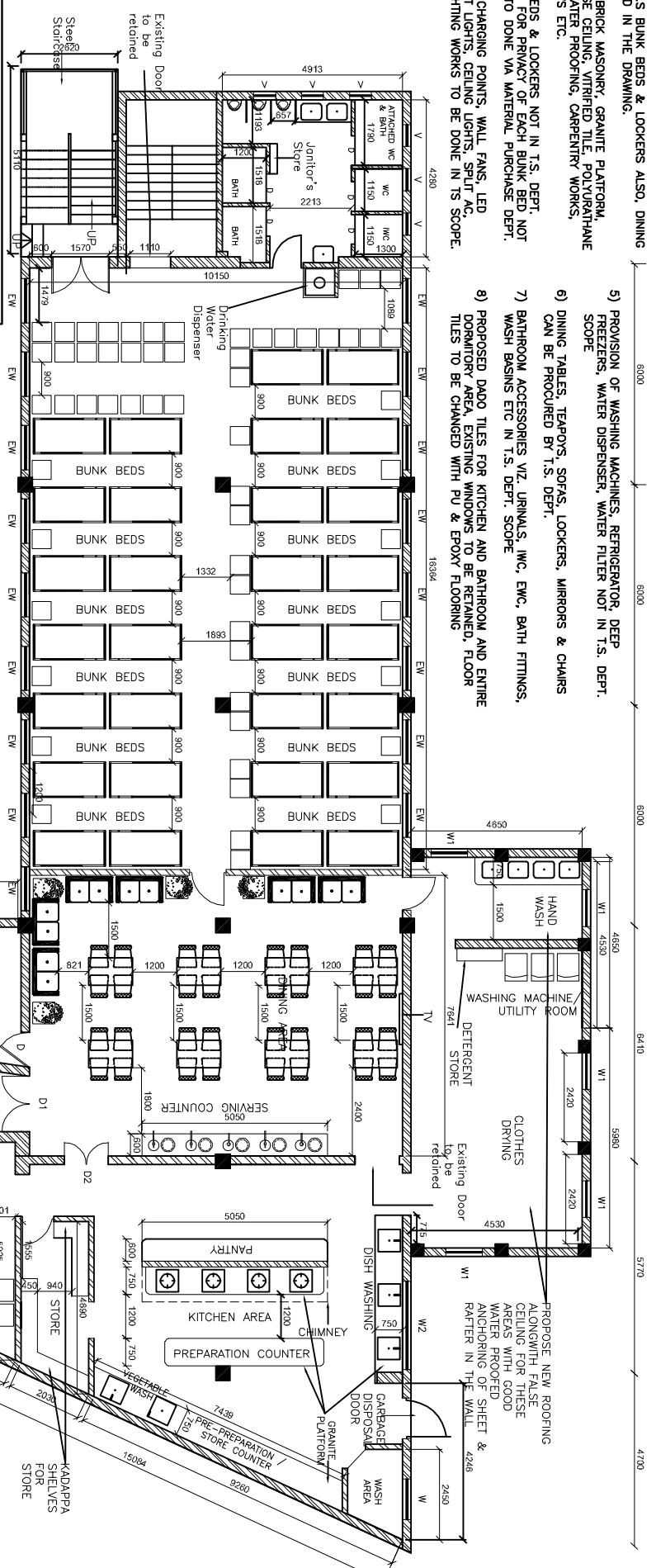


SCOPE OF WORK FOR CIVIL AND INTERIOR WORKS ONLY:

- 1) PROVISION FOR 80 NOS BUNK BEDS & LOCKERS ALSO. DINING FOR 30 NOS INDICATED IN THE DRAWING.
- 2) CIVIL WORKS INCLUDE BRICK MASONRY, GRANITE PLATFORM, DOORS, WINDOWS, FALSE CEILING, VITRIFIED TILE, POLYURETHANE & EPOXY FLOORING, WATER PROOFING, CARPENTRY WORKS, MOSQUITO NET WINDOWS ETC.
- 3) PROVISION OF BUNK BEDS & LOCKERS NOT IN T.S. DEPT. SCOPE, CURTAIN ITEMS FOR PRIVACY OF EACH BUNK BED NOT IN ITS SCOPE, IT HAS TO BE DONE VIA MATERIAL PURCHASE DEPT.
- 4) PROVISION OF MOBILE CHARGING POINTS, WALL FANS, LED LIGHTS INCLUDING SPOT LIGHTS, CEILING LIGHTS, SPLIT AC, EXHAUST FANS ETC. LIGHTING WORKS TO BE DONE IN ITS SCOPE.
- 5) PROVISION OF WASHING MACHINES, REFRIGERATOR, DEEP FREEZERS, WATER DISPENSER, WATER FILTER NOT IN T.S. DEPT. SCOPE
- 6) DINING TABLES, TEAPOTS, SOFAS, LOCKERS, MIRRORS & CHAIRS CAN BE PROCURED BY T.S. DEPT.
- 7) BATHROOM ACCESSORIES VIZ URINALS, INC. EWC, BATH FITTINGS, WASH BASINS ETC IN T.S. DEPT. SCOPE
- 8) PROPOSED DADO TILES FOR KITCHEN AND BATHROOM AND ENTIRE DORMITORY AREA. EXISTING WINDOWS TO BE RETAINED, FLOOR TILES TO BE CHANGED WITH PU & EPOXY FLOORING.



ALL DIMENSIONS ARE IN MM

PROPOSED PLAN & DETAILS OF 1ST FLOOR MOGUL HOUSE - SY CANTEEN CONVERSION TO DORMITORY & GALLEY



MAZAGON DOCK SHIPBUILDERS LTD.

| | | | | | |
|------------|--------------|-----------------------------|--|-------|--|
| NORTH | | Dwg. No. : TS/CV/NY/WB-1/01 | | REV-1 | |
| Date | Scale | Drawn & Checked by | | | |
| 12.01.2022 | NOT TO SCALE | Ar. Ketaki Sampur | | | |