



निविदा पूछताछ
TENDER ENQUIRY

[ग्राहक नामांकित सीमित निविदा]
[CUSTOMER NOMINATED LIMITED TENDER]

माझगांव डॉक शिपबिल्डर्स लिमिटेड
(भारत सरकार का उपक्रम)

MAZAGON DOCK SHIPBUILDERS LIMITED
(Formerly known as Mazagon Dock Limited)
(A Govt. of India Undertaking)
CIN: L35100MH1934GOI002079
Dockyard Road, Mumbai 400 010
Website- www.mazagondock.in
Certified - ISO 9001: 2008 for Shipbuilding Division
GST ID : 27AAACM8029J1ZA

निविदा सं./Tender No	1700000541	विभाग/Department	MPV COMMERCIAL
क्रय अधिकारी/Purchase Exec.	Bhuvnesh Kalwar	क्रय अधिकारी/Purchase Exec.	Bhuvnesh Kalwar
सेवा में/To		दूरभाष सं./Telephone No	23762738
		फैक्स सं./Fax No	23744709
		ई-मेल/E-Mail	bkalwar@mazdock.com
दूरभाष सं./Telephone		निविदा सं./Tender No	1700000541
फैक्स सं./Fax		निविदा तिथि/ Tender Date	27.03.2024
ई-मेल/E-Mail		निविदा बंद की तिथि/Tender Closing Date	10.04.2024
		निविदा बंद होने का समय/Tender Closing Time	14:00:00
		आरएफक्यू सं./RFQ No	2230000032

निविदा शुल्क/Tender Fee	रु/Rs	0.00
बयाना राशि/EMD Amount	रु/Rs	0.00
पूर्व बिड बैठक तिथि और समय/Pre Bid Meeting Date & Time		,00:00:00
निविदा खोलने की तिथि और समय/Tender Opening Date & Time		12.04.2024,14:00:00
प्रस्ताव वैधता तिथि है/Offer should be valid up to		07.10.2024
सुरक्षा जमा/Security Deposit		0.00 %आदेश मूल्य का/PO value
वरीय बैंक जमानत /Perf. Bank Guarantee		5.00 %आदेश मूल्य का/PO value

(आगे के विवरण हेतु कृपया सम्बंधित नियम शर्तों को पढ़ें। सुनिश्चित करें कि कोटेशन और संबंधित पत्राचार के लिए विभाग का नाम, क्रय अधिकारी का नाम, निविदा संख्या, बंद होने का समय एवं तिथि एवं आरएफक्यू सं. अपने कोटेशनमें लिखें।)

Kindly read and refer relevant terms & conditions for further details. Do ensure to Quote Department Name, Purchase Executive's Name, Tender Number, closing date & time and RFQ Number in your Quotation & related correspondence)

प्रिय महोदय/महोदया
Dear Sir / Madam ,

विषय /SUB:- SUPPLY OF SHIP ILLUMINATION AND DECK LIGHTING FOR PROJECT 7500 DWT MULTI PURPOSE DRY CARGO VESSEL.

माझगांव डॉक शिपबिल्डर्स लिमिटेड प्रतिष्ठित/संभावित आपूर्तिकर्ताओं से निम्न हेतु, प्रतियोगितात्मक दो बोली प्रणाली में (भाग -I तकनीकी - वाणिज्य बोली एवं भाग II मूल्य बोली) बोली आमंत्रित करती है।

Mazagon Dock Shipbuilders Limited (MDL) invites Competitive - Bid from reputed Supplier for the following in TWO BID system (Part - I Techno - Commercial Bid & Part - II Price Bid).

क्र सं. SL.No.	सामग्री / सेवा विवरण Material / Service Details	मात्रा / इकाई Quantity / unit	आपूर्ति तिथि Delivery Date
00100	सामग्री सं./ Material Number :- 150000000000077071 LED LIGHT FITTING FLUSH TYPE, 25W, IP 20 सामग्री वर्णन/Material Description :LED LIGHT FITTING FLUSH TYPE, 25W, IP 20	99 Number	31.03.2025

क्र सं. SL.No.	सामग्री / सेवा विवरण Material / Service Details	मात्रा / इकाई Quantity / unit	आपूर्ति तिथि Delivery Date
00200	सामग्री सं./ Material Number :- 150000000000077074 LED LIGHT FITTING SURFACE TYPE, 22W, IP सामग्री वर्णन/Material Description :LED LIGHT FITTING SURFACE TYPE, 22W, IP 55	80 Number	31.03.2025
00300	सामग्री सं./ Material Number :- 150000000000077076 LED LIGHT FITTING SURFACE TYPE, 22W, EX सामग्री वर्णन/Material Description :LED LIGHT FITTING SURFACE TYPE, 22W, EXPLOSION PROOF	5 Number	31.03.2025
00400	सामग्री सं./ Material Number :- 150000000000077075 LED LIGHT FITTING SURFACE TYPE, 22W, IP सामग्री वर्णन/Material Description :LED LIGHT FITTING SURFACE TYPE, 22W, IP 22	78 Number	31.03.2025
00500	सामग्री सं./ Material Number :- 150000000000077079 LED PENDENT LIGHT FITTING, 20W, IP55 सामग्री वर्णन/Material Description :LED PENDENT LIGHT FITTING, 20W, IP55	62 Number	31.03.2025
00600	सामग्री सं./ Material Number :- 150000000000077081 WORKSHOP LIFHT FITTING WITH FLEXIBLE ARM सामग्री वर्णन/Material Description :WORKSHOP LIGHT FITTING WITH FLEXIBLE ARM & ON/OFF SWITCH , 15W	3 SET	31.03.2025
00700	सामग्री सं./ Material Number :- 150000000000077082 LED FLOOD LIGHT 100W, IPN 22 सामग्री वर्णन/Material Description :LED FLOOD LIGHT 100W, IPN 22	4 Number	31.03.2025
00800	सामग्री सं./ Material Number :- 150000000000077083 LED PENDENT LIGHT FITTING, 20W, IP20 सामग्री वर्णन/Material Description :LED PENDENT LIGHT FITTING, 20W, IP20	8 Number	31.03.2025
00900	सामग्री सं./ Material Number :- 150000000000077084 LED LIGHT FITTING,PENDANT TYPE , 20W, EX सामग्री वर्णन/Material Description :LED LIGHT FITTING,PENDANT TYPE , 20W, EXPLOSION PROOF	32 Number	31.03.2025
01000	सामग्री सं./ Material Number :- 150000000000077085 DESK LIGHT 8 W (STAND TYPE ,W/SWITCH,PLU	15 SET	31.03.2025

क्र सं. SL.No.	सामग्री / सेवा विवरण Material / Service Details	मात्रा / इकाई Quantity / unit	आपूर्ति तिथि Delivery Date
	सामग्री वर्णन/Material Description :DESK LIGHT 8 W (STAND TYPE ,W/SWITCH,PLUG & CABLE)		
01100	सामग्री सं./ Material Number :- 150000000000077088 LED FLOOD LIGHT FOR CARGO HOLD ,150W, EX सामग्री वर्णन/Material Description :LED FLOOD LIGHT FOR CARGO HOLD ,150W, EXPLOSION PROOF	12 Number	31.03.2025
01200	सामग्री सं./ Material Number :- 150000000000077090 LED FLOOD LIGHT 100W, IP55 सामग्री वर्णन/Material Description :LED FLOOD LIGHT 100W, IP55	24 Number	31.03.2025
01300	सामग्री सं./ Material Number :- 150000000000077091 LED BIRTH LIGHT , 8W, IP20 सामग्री वर्णन/Material Description :LED BIRTH LIGHT , 8W, IP20	13 Number	31.03.2025
01400	सामग्री सं./ Material Number :- 150000000000077093 GOOSE NECK LIGHTS WITH DIMMING FACILITY सामग्री वर्णन/Material Description :GOOSE NECK LIGHTS WITH DIMMING FACILITY	3 Number	31.03.2025
01500	सामग्री सं./ Material Number :- 150000000000077097 DOOR LIMIT SWITCH सामग्री वर्णन/Material Description :DOOR LIMIT SWITCH	1 Number	31.03.2025
01600	सामग्री सं./ Material Number :- 150000000000077178 MIRROR LIGHT,W/SOCKET, & ON/OFF SWITCH) सामग्री वर्णन/Material Description :MIRROR LIGHT,W/SOCKET, & ON/OFF SWITCH)	5 Number	31.03.2025
01700	सामग्री सं./ Material Number :- 150000000000077101 LED WALL LAMP,12W, IP20 सामग्री वर्णन/Material Description :LED WALL LAMP,12W, IP20	14 Number	31.03.2025
01800	सामग्री सं./ Material Number :- 150000000000077102 SEARCH LIGHT 1KW,IP55 सामग्री वर्णन/Material Description :SEARCH LIGHT 1KW,IP55	1 Number	31.03.2025
01900	सामग्री सं./ Material Number :- 150000000000077103 SUEZ CANAL SEARCH LIGHT , 3KW. IP 55 सामग्री वर्णन/Material Description :SUEZ CANAL SEARCH LIGHT , 3KW. IP 55	1 Number	31.03.2025

क्र सं. SL.No.	सामग्री / सेवा विवरण Material / Service Details	मात्रा / इकाई Quantity / unit	आपूर्ति तिथि Delivery Date
02000	सामग्री सं./ Material Number :- 150000000000077179 CHART TABLE LIGHT , IP20 सामग्री वर्णन/Material Description :CHART TABLE LIGHT , IP20	1 Number	31.03.2025
02100	सामग्री सं./ Material Number :- 150000000000077107 DAY LIGHT SIGNAL LIGHT, WITH CABLE , PLU सामग्री वर्णन/Material Description :DAY LIGHT SIGNAL LIGHT, WITH CABLE , PLUG, PORTABLE TYPE	1 SET	31.03.2025
02200	सामग्री सं./ Material Number :- 150000000000077109 JUNCTION BOX (WT) सामग्री वर्णन/Material Description :JUNCTION BOX (WT)	59 Number	31.03.2025
02300	सामग्री सं./ Material Number :- 150000000000077110 JUNCTION BOX (NWT) सामग्री वर्णन/Material Description :JUNCTION BOX (NWT)	67 Number	31.03.2025
02400	SERVICE OF TECHNICAL ASSISTANCE The Line item 02400 covers the following services	1 Activity unit	30.06.2025
000000001 0	सेवा सं./Service Number :- संक्षिप्त वर्णन/Short Description :- SERVICE OF TECHNICAL ASSISTANCE	1 Activity unit	
02500	सामग्री सं./ Material Number :- 150000000000077071 LED LIGHT FITTING FLUSH TYPE, 25W, IP 20 सामग्री वर्णन/Material Description :LED LIGHT FITTING FLUSH TYPE, 25W, IP 20	99 Number	30.05.2025
02600	सामग्री सं./ Material Number :- 150000000000077074 LED LIGHT FITTING SURFACE TYPE, 22W, IP सामग्री वर्णन/Material Description :LED LIGHT FITTING SURFACE TYPE, 22W, IP 55	80 Number	30.05.2025
02700	सामग्री सं./ Material Number :- 150000000000077076 LED LIGHT FITTING SURFACE TYPE, 22W, EX सामग्री वर्णन/Material Description :LED LIGHT FITTING SURFACE TYPE, 22W, EXPLOSION PROOF	5 Number	30.05.2025
02800	सामग्री सं./ Material Number :- 150000000000077075 LED LIGHT FITTING SURFACE TYPE, 22W, IP	78 Number	30.05.2025

क्र सं. SL.No.	सामग्री / सेवा विवरण Material / Service Details	मात्रा / इकाई Quantity / unit	आपूर्ति तिथि Delivery Date
	सामग्री वर्णन/Material Description :LED LIGHT FITTING SURFACE TYPE, 22W, IP 22		
02900	सामग्री सं./ Material Number :- 150000000000077079 LED PENDENT LIGHT FITTING, 20W, IP55 सामग्री वर्णन/Material Description :LED PENDENT LIGHT FITTING, 20W, IP55	62 Number	30.05.2025
03000	सामग्री सं./ Material Number :- 150000000000077081 WORKSHOP LIFHT FITTING WITH FLEXIBLE ARM सामग्री वर्णन/Material Description :WORKSHOP LIGHT FITTING WITH FLEXIBLE ARM & ON/OFF SWITCH , 15W	3 SET	30.05.2025
03100	सामग्री सं./ Material Number :- 150000000000077082 LED FLOOD LIGHT 100W, IPN 22 सामग्री वर्णन/Material Description :LED FLOOD LIGHT 100W, IPN 22	4 Number	30.05.2025
03200	सामग्री सं./ Material Number :- 150000000000077083 LED PENDENT LIGHT FITTING, 20W, IP20 सामग्री वर्णन/Material Description :LED PENDENT LIGHT FITTING, 20W, IP20	8 Number	30.05.2025
03300	सामग्री सं./ Material Number :- 150000000000077084 LED LIGHT FITTING,PENDANT TYPE , 20W, EX सामग्री वर्णन/Material Description :LED LIGHT FITTING,PENDANT TYPE , 20W, EXPLOSION PROOF	32 Number	30.05.2025
03400	सामग्री सं./ Material Number :- 150000000000077085 DESK LIGHT 8 W (STAND TYPE ,W/SWITCH,PLU सामग्री वर्णन/Material Description :DESK LIGHT 8 W (STAND TYPE ,W/SWITCH,PLUG & CABLE)	15 SET	30.05.2025
03500	सामग्री सं./ Material Number :- 150000000000077088 LED FLOOD LIGHT FOR CARGO HOLD ,150W, EX सामग्री वर्णन/Material Description :LED FLOOD LIGHT FOR CARGO HOLD ,150W, EXPLOSION PROOF	12 Number	30.05.2025
03600	सामग्री सं./ Material Number :- 150000000000077090 LED FLOOD LIGHT 100W, IP55 सामग्री वर्णन/Material Description :LED FLOOD LIGHT 100W, IP55	24 Number	30.05.2025
03700	सामग्री सं./ Material Number :- 150000000000077091	13 Number	30.05.2025

क्र सं. SL.No.	सामग्री / सेवा विवरण Material / Service Details	मात्रा / इकाई Quantity / unit	आपूर्ति तिथि Delivery Date
	LED BIRTH LIGHT , 8W, IP20 सामग्री वर्णन/Material Description :LED BIRTH LIGHT , 8W, IP20		
03800	सामग्री सं./ Material Number :- 150000000000077093 GOOSE NECK LIGHTS WITH DIMMING FACILITY सामग्री वर्णन/Material Description :GOOSE NECK LIGHTS WITH DIMMING FACILITY	3 Number	30.05.2025
03900	सामग्री सं./ Material Number :- 150000000000077097 DOOR LIMIT SWITCH सामग्री वर्णन/Material Description :DOOR LIMIT SWITCH	1 Number	30.05.2025
04000	सामग्री सं./ Material Number :- 150000000000077178 MIRROR LIGHT,W/SOCKET, & ON/OFF SWITCH) सामग्री वर्णन/Material Description :MIRROR LIGHT,W/SOCKET, & ON/OFF SWITCH)	5 Number	30.05.2025
04100	सामग्री सं./ Material Number :- 150000000000077101 LED WALL LAMP,12W, IP20 सामग्री वर्णन/Material Description :LED WALL LAMP,12W, IP20	14 Number	30.05.2025
04200	सामग्री सं./ Material Number :- 150000000000077102 SEARCH LIGHT 1KW,IP55 सामग्री वर्णन/Material Description :SEARCH LIGHT 1KW,IP55	1 Number	30.05.2025
04300	सामग्री सं./ Material Number :- 150000000000077103 SUEZ CANAL SEARCH LIGHT , 3KW. IP 55 सामग्री वर्णन/Material Description :SUEZ CANAL SEARCH LIGHT , 3KW. IP 55	1 Number	30.05.2025
04400	सामग्री सं./ Material Number :- 150000000000077179 CHART TABLE LIGHT , IP20 सामग्री वर्णन/Material Description :CHART TABLE LIGHT , IP20	1 Number	30.05.2025
04500	सामग्री सं./ Material Number :- 150000000000077107 DAY LIGHT SIGNAL LIGHT, WITH CABLE , PLU सामग्री वर्णन/Material Description :DAY LIGHT SIGNAL LIGHT, WITH CABLE , PLUG, PORTABLE TYPE	1 SET	30.05.2025
04600	सामग्री सं./ Material Number :- 150000000000077109 JUNCTION BOX (WT) सामग्री वर्णन/Material Description :JUNCTION BOX (WT)	59 Number	30.05.2025

क्र सं. SL.No.	सामग्री / सेवा विवरण Material / Service Details	मात्रा / इकाई Quantity / unit	आपूर्ति तिथि Delivery Date
04700	सामग्री सं./ Material Number :- 150000000000077110 JUNCTION BOX (NWT) सामग्री वर्णन/Material Description :JUNCTION BOX (NWT)	67 Number	30.05.2025
04800	SERVICE OF TECHNICAL ASSISTANCE The Line item 04800 covers the following services	1 Activity unit	29.08.2025
000000001 0	सेवा सं./Service Number :- संक्षिप्त वर्णन/Short Description :- SERVICE OF TECHNICAL ASSISTANCE	1 Activity unit	
04900	सामग्री सं./ Material Number :- 150000000000077071 LED LIGHT FITTING FLUSH TYPE, 25W, IP 20 सामग्री वर्णन/Material Description :LED LIGHT FITTING FLUSH TYPE, 25W, IP 20	99 Number	31.07.2025
05000	सामग्री सं./ Material Number :- 150000000000077074 LED LIGHT FITTING SURFACE TYPE, 22W, IP सामग्री वर्णन/Material Description :LED LIGHT FITTING SURFACE TYPE, 22W, IP 55	80 Number	31.07.2025
05100	सामग्री सं./ Material Number :- 150000000000077076 LED LIGHT FITTING SURFACE TYPE, 22W, EX सामग्री वर्णन/Material Description :LED LIGHT FITTING SURFACE TYPE, 22W, EXPLOSION PROOF	5 Number	31.07.2025
05200	सामग्री सं./ Material Number :- 150000000000077075 LED LIGHT FITTING SURFACE TYPE, 22W, IP सामग्री वर्णन/Material Description :LED LIGHT FITTING SURFACE TYPE, 22W, IP 22	78 Number	31.07.2025
05300	सामग्री सं./ Material Number :- 150000000000077079 LED PENDENT LIGHT FITTING, 20W, IP55 सामग्री वर्णन/Material Description :LED PENDENT LIGHT FITTING, 20W, IP55	62 Number	31.07.2025
05400	सामग्री सं./ Material Number :- 150000000000077081 WORKSHOP LIFHT FITTING WITH FLEXIBLE ARM सामग्री वर्णन/Material Description :WORKSHOP LIGHT FITTING WITH FLEXIBLE ARM & ON/OFF SWITCH , 15W	3 SET	31.07.2025
05500	सामग्री सं./ Material Number :- 150000000000077082	4 Number	31.07.2025

क्र सं. SL.No.	सामग्री / सेवा विवरण Material / Service Details	मात्रा / इकाई Quantity / unit	आपूर्ति तिथि Delivery Date
	LED FLOOD LIGHT 100W, IPN 22 सामग्री वर्णन/Material Description :LED FLOOD LIGHT 100W, IPN 22		
05600	सामग्री सं./ Material Number :- 150000000000077083 LED PENDENT LIGHT FITTING, 20W, IP20 सामग्री वर्णन/Material Description :LED PENDENT LIGHT FITTING, 20W, IP20	8 Number	31.07.2025
05700	सामग्री सं./ Material Number :- 150000000000077084 LED LIGHT FITTING,PENDANT TYPE , 20W, EX सामग्री वर्णन/Material Description :LED LIGHT FITTING,PENDANT TYPE , 20W, EXPLOSION PROOF	32 Number	31.07.2025
05800	सामग्री सं./ Material Number :- 150000000000077085 DESK LIGHT 8 W (STAND TYPE ,W/SWITCH,PLU सामग्री वर्णन/Material Description :DESK LIGHT 8 W (STAND TYPE ,W/SWITCH,PLUG & CABLE)	15 SET	31.07.2025
05900	सामग्री सं./ Material Number :- 150000000000077088 LED FLOOD LIGHT FOR CARGO HOLD ,150W, EX सामग्री वर्णन/Material Description :LED FLOOD LIGHT FOR CARGO HOLD ,150W, EXPLOSION PROOF	12 Number	31.07.2025
06000	सामग्री सं./ Material Number :- 150000000000077090 LED FLOOD LIGHT 100W, IP55 सामग्री वर्णन/Material Description :LED FLOOD LIGHT 100W, IP55	24 Number	31.07.2025
06100	सामग्री सं./ Material Number :- 150000000000077091 LED BIRTH LIGHT , 8W, IP20 सामग्री वर्णन/Material Description :LED BIRTH LIGHT , 8W, IP20	13 Number	31.07.2025
06200	सामग्री सं./ Material Number :- 150000000000077093 GOOSE NECK LIGHTS WITH DIMMING FACILITY सामग्री वर्णन/Material Description :GOOSE NECK LIGHTS WITH DIMMING FACILITY	3 Number	31.07.2025
06300	सामग्री सं./ Material Number :- 150000000000077097 DOOR LIMIT SWITCH सामग्री वर्णन/Material Description :DOOR LIMIT SWITCH	1 Number	31.07.2025
06400	सामग्री सं./ Material Number :- 150000000000077178 MIRROR LIGHT,W/SOCKET, & ON/OFF SWITCH)	5 Number	31.07.2025

निविदा सं./ Tender No:- 1700000541		निविदा तिथि/ Tender Date:- 27.03.2024		आरएफक्यू सं./RFQ No:- 2230000032	
क्र सं. SL.No.	सामग्री / सेवा विवरण Material / Service Details	मात्रा / इकाई Quantity / unit	आपूर्ति तिथि Delivery Date		
सामग्री वर्णन/Material Description :MIRROR LIGHT,W/SOCKET, & ON/OFF SWITCH)					
06500	सामग्री सं./ Material Number :- 150000000000077101 LED WALL LAMP,12W, IP20 सामग्री वर्णन/Material Description :LED WALL LAMP,12W, IP20	14 Number	31.07.2025		
06600	सामग्री सं./ Material Number :- 150000000000077102 SEARCH LIGHT 1KW,IP55 सामग्री वर्णन/Material Description :SEARCH LIGHT 1KW,IP55	1 Number	31.07.2025		
06700	सामग्री सं./ Material Number :- 150000000000077103 SUEZ CANAL SEARCH LIGHT , 3KW. IP 55 सामग्री वर्णन/Material Description :SUEZ CANAL SEARCH LIGHT , 3KW. IP 55	1 Number	31.07.2025		
06800	सामग्री सं./ Material Number :- 150000000000077179 CHART TABLE LIGHT , IP20 सामग्री वर्णन/Material Description :CHART TABLE LIGHT , IP20	1 Number	31.07.2025		
06900	सामग्री सं./ Material Number :- 150000000000077107 DAY LIGHT SIGNAL LIGHT, WITH CABLE , PLU सामग्री वर्णन/Material Description :DAY LIGHT SIGNAL LIGHT, WITH CABLE , PLUG, PORTABLE TYPE	1 SET	31.07.2025		
07000	सामग्री सं./ Material Number :- 150000000000077109 JUNCTION BOX (WT) सामग्री वर्णन/Material Description :JUNCTION BOX (WT)	59 Number	31.07.2025		
07100	सामग्री सं./ Material Number :- 150000000000077110 JUNCTION BOX (NWT) सामग्री वर्णन/Material Description :JUNCTION BOX (NWT)	67 Number	31.07.2025		
07200	SERVICE OF TECHNICAL ASSISTANCE The Line item 07200 covers the following services	1 Activity unit	31.10.2025		
0000000010	सेवा सं./Service Number :- संक्षिप्त वर्णन/Short Description :- SERVICE OF TECHNICAL ASSISTANCE	1 Activity unit			
07300	सामग्री सं./ Material Number :- 150000000000077071 LED LIGHT FITTING FLUSH TYPE, 25W, IP 20	99 Number	30.09.2025		

क्र सं. SL.No.	सामग्री / सेवा विवरण Material / Service Details	मात्रा / इकाई Quantity / unit	आपूर्ति तिथि Delivery Date
	सामग्री वर्णन/Material Description :LED LIGHT FITTING FLUSH TYPE, 25W, IP 20		
07400	सामग्री सं./ Material Number :- 150000000000077074 LED LIGHT FITTING SURFACE TYPE, 22W, IP	80 Number	30.09.2025
	सामग्री वर्णन/Material Description :LED LIGHT FITTING SURFACE TYPE, 22W, IP 55		
07500	सामग्री सं./ Material Number :- 150000000000077076 LED LIGHT FITTING SURFACE TYPE, 22W, EX	5 Number	30.09.2025
	सामग्री वर्णन/Material Description :LED LIGHT FITTING SURFACE TYPE, 22W, EXPLOSION PROOF		
07600	सामग्री सं./ Material Number :- 150000000000077075 LED LIGHT FITTING SURFACE TYPE, 22W, IP	78 Number	30.09.2025
	सामग्री वर्णन/Material Description :LED LIGHT FITTING SURFACE TYPE, 22W, IP 22		
07700	सामग्री सं./ Material Number :- 150000000000077079 LED PENDENT LIGHT FITTING, 20W, IP55	62 Number	30.09.2025
	सामग्री वर्णन/Material Description :LED PENDENT LIGHT FITTING, 20W, IP55		
07800	सामग्री सं./ Material Number :- 150000000000077081 WORKSHOP LIFHT FITTING WITH FLEXIBLE ARM	3 SET	30.09.2025
	सामग्री वर्णन/Material Description :WORKSHOP LIGHT FITTING WITH FLEXIBLE ARM & ON/OFF SWITCH , 15W		
07900	सामग्री सं./ Material Number :- 150000000000077082 LED FLOOD LIGHT 100W, IPN 22	4 Number	30.09.2025
	सामग्री वर्णन/Material Description :LED FLOOD LIGHT 100W, IPN 22		
08000	सामग्री सं./ Material Number :- 150000000000077083 LED PENDENT LIGHT FITTING, 20W, IP20	8 Number	30.09.2025
	सामग्री वर्णन/Material Description :LED PENDENT LIGHT FITTING, 20W, IP20		
08100	सामग्री सं./ Material Number :- 150000000000077084 LED LIGHT FITTING,PENDANT TYPE , 20W, EX	32 Number	30.09.2025
	सामग्री वर्णन/Material Description :LED LIGHT FITTING,PENDANT TYPE , 20W, EXPLOSION PROOF		
08200	सामग्री सं./ Material Number :- 150000000000077085	15 SET	30.09.2025

क्र सं. SL.No.	सामग्री / सेवा विवरण Material / Service Details	मात्रा / इकाई Quantity / unit	आपूर्ति तिथि Delivery Date
	DESK LIGHT 8 W (STAND TYPE ,W/SWITCH,PLU सामग्री वर्णन/Material Description :DESK LIGHT 8 W (STAND TYPE ,W/SWITCH,PLUG & CABLE)		
08300	सामग्री सं./ Material Number :- 150000000000077088 LED FLOOD LIGHT FOR CARGO HOLD ,150W, EX सामग्री वर्णन/Material Description :LED FLOOD LIGHT FOR CARGO HOLD ,150W, EXPLOSION PROOF	12 Number	30.09.2025
08400	सामग्री सं./ Material Number :- 150000000000077090 LED FLOOD LIGHT 100W, IP55 सामग्री वर्णन/Material Description :LED FLOOD LIGHT 100W, IP55	24 Number	30.09.2025
08500	सामग्री सं./ Material Number :- 150000000000077091 LED BIRTH LIGHT , 8W, IP20 सामग्री वर्णन/Material Description :LED BIRTH LIGHT , 8W, IP20	13 Number	30.09.2025
08600	सामग्री सं./ Material Number :- 150000000000077093 GOOSE NECK LIGHTS WITH DIMMING FACILITY सामग्री वर्णन/Material Description :GOOSE NECK LIGHTS WITH DIMMING FACILITY	3 Number	30.09.2025
08700	सामग्री सं./ Material Number :- 150000000000077097 DOOR LIMIT SWITCH सामग्री वर्णन/Material Description :DOOR LIMIT SWITCH	1 Number	30.09.2025
08800	सामग्री सं./ Material Number :- 150000000000077178 MIRROR LIGHT,W/SOCKET, & ON/OFF SWITCH) सामग्री वर्णन/Material Description :MIRROR LIGHT,W/SOCKET, & ON/OFF SWITCH)	5 Number	30.09.2025
08900	सामग्री सं./ Material Number :- 150000000000077101 LED WALL LAMP,12W, IP20 सामग्री वर्णन/Material Description :LED WALL LAMP,12W, IP20	14 Number	30.09.2025
09000	सामग्री सं./ Material Number :- 150000000000077102 SEARCH LIGHT 1KW,IP55 सामग्री वर्णन/Material Description :SEARCH LIGHT 1KW,IP55	1 Number	30.09.2025
09100	सामग्री सं./ Material Number :- 150000000000077103 SUEZ CANAL SEARCH LIGHT , 3KW. IP 55 सामग्री वर्णन/Material Description :SUEZ CANAL SEARCH LIGHT , 3KW. IP 55	1 Number	30.09.2025

निविदा सं./ Tender No:- 1700000541		निविदा तिथि/ Tender Date:- 27.03.2024		आरएफक्यू सं./RFQ No:- 2230000032	
क्र सं. SL.No.	सामग्री / सेवा विवरण Material / Service Details	मात्रा / इकाई Quantity / unit	आपूर्ति तिथि Delivery Date		
09200	सामग्री सं./ Material Number :- 150000000000077179 CHART TABLE LIGHT , IP20 सामग्री वर्णन/Material Description :CHART TABLE LIGHT , IP20	1 Number	30.09.2025		
09300	सामग्री सं./ Material Number :- 150000000000077107 DAY LIGHT SIGNAL LIGHT, WITH CABLE , PLU सामग्री वर्णन/Material Description :DAY LIGHT SIGNAL LIGHT, WITH CABLE , PLUG, PORTABLE TYPE	1 SET	30.09.2025		
09400	सामग्री सं./ Material Number :- 150000000000077109 JUNCTION BOX (WT) सामग्री वर्णन/Material Description :JUNCTION BOX (WT)	59 Number	30.09.2025		
09500	सामग्री सं./ Material Number :- 150000000000077110 JUNCTION BOX (NWT) सामग्री वर्णन/Material Description :JUNCTION BOX (NWT)	67 Number	30.09.2025		
09600	SERVICE OF TECHNICAL ASSISTANCE The Line item 09600 covers the following services	1 Activity unit	31.12.2025		
000000001 0	सेवा सं./Service Number :- संक्षिप्त वर्णन/Short Description :- SERVICE OF TECHNICAL ASSISTANCE	1 Activity unit			
09700	सामग्री सं./ Material Number :- 150000000000077071 LED LIGHT FITTING FLUSH TYPE, 25W, IP 20 सामग्री वर्णन/Material Description :LED LIGHT FITTING FLUSH TYPE, 25W, IP 20	99 Number	28.11.2025		
09800	सामग्री सं./ Material Number :- 150000000000077074 LED LIGHT FITTING SURFACE TYPE, 22W, IP सामग्री वर्णन/Material Description :LED LIGHT FITTING SURFACE TYPE, 22W, IP 55	80 Number	28.11.2025		
09900	सामग्री सं./ Material Number :- 150000000000077076 LED LIGHT FITTING SURFACE TYPE, 22W, EX सामग्री वर्णन/Material Description :LED LIGHT FITTING SURFACE TYPE, 22W, EXPLOSION PROOF	5 Number	28.11.2025		
10000	सामग्री सं./ Material Number :- 150000000000077075	78 Number	28.11.2025		

क्र सं. SL.No.	सामग्री / सेवा विवरण Material / Service Details	मात्रा / इकाई Quantity / unit	आपूर्ति तिथि Delivery Date
	LED LIGHT FITTING SURFACE TYPE, 22W, IP सामग्री वर्णन/Material Description :LED LIGHT FITTING SURFACE TYPE, 22W, IP 22		
10100	सामग्री सं./ Material Number :- 150000000000077079 LED PENDENT LIGHT FITTING, 20W, IP55 सामग्री वर्णन/Material Description :LED PENDENT LIGHT FITTING, 20W, IP55	62 Number	28.11.2025
10200	सामग्री सं./ Material Number :- 150000000000077081 WORKSHOP LIFHT FITTING WITH FLEXIBLE ARM सामग्री वर्णन/Material Description :WORKSHOP LIGHT FITTING WITH FLEXIBLE ARM & ON/OFF SWITCH , 15W	3 SET	28.11.2025
10300	सामग्री सं./ Material Number :- 150000000000077082 LED FLOOD LIGHT 100W, IPN 22 सामग्री वर्णन/Material Description :LED FLOOD LIGHT 100W, IPN 22	4 Number	28.11.2025
10400	सामग्री सं./ Material Number :- 150000000000077083 LED PENDENT LIGHT FITTING, 20W, IP20 सामग्री वर्णन/Material Description :LED PENDENT LIGHT FITTING, 20W, IP20	8 Number	28.11.2025
10500	सामग्री सं./ Material Number :- 150000000000077084 LED LIGHT FITTING,PENDANT TYPE , 20W, EX सामग्री वर्णन/Material Description :LED LIGHT FITTING,PENDANT TYPE , 20W, EXPLOSION PROOF	32 Number	28.11.2025
10600	सामग्री सं./ Material Number :- 150000000000077085 DESK LIGHT 8 W (STAND TYPE ,W/SWITCH,PLU सामग्री वर्णन/Material Description :DESK LIGHT 8 W (STAND TYPE ,W/SWITCH,PLUG & CABLE)	15 SET	28.11.2025
10700	सामग्री सं./ Material Number :- 150000000000077088 LED FLOOD LIGHT FOR CARGO HOLD ,150W, EX सामग्री वर्णन/Material Description :LED FLOOD LIGHT FOR CARGO HOLD ,150W, EXPLOSION PROOF	12 Number	28.11.2025
10800	सामग्री सं./ Material Number :- 150000000000077090 LED FLOOD LIGHT 100W, IP55 सामग्री वर्णन/Material Description :LED FLOOD LIGHT 100W, IP55	24 Number	28.11.2025

क्र सं. SL.No.	सामग्री / सेवा विवरण Material / Service Details	मात्रा / इकाई Quantity / unit	आपूर्ति तिथि Delivery Date
10900	सामग्री सं./ Material Number :- 150000000000077091 LED BIRTH LIGHT , 8W, IP20 सामग्री वर्णन/Material Description :LED BIRTH LIGHT , 8W, IP20	13 Number	28.11.2025
11000	सामग्री सं./ Material Number :- 150000000000077093 GOOSE NECK LIGHTS WITH DIMMING FACILITY सामग्री वर्णन/Material Description :GOOSE NECK LIGHTS WITH DIMMING FACILITY	3 Number	28.11.2025
11100	सामग्री सं./ Material Number :- 150000000000077097 DOOR LIMIT SWITCH सामग्री वर्णन/Material Description :DOOR LIMIT SWITCH	1 Number	28.11.2025
11200	सामग्री सं./ Material Number :- 150000000000077178 MIRROR LIGHT,W/SOCKET, & ON/OFF SWITCH) सामग्री वर्णन/Material Description :MIRROR LIGHT,W/SOCKET, & ON/OFF SWITCH)	5 Number	28.11.2025
11300	सामग्री सं./ Material Number :- 150000000000077101 LED WALL LAMP,12W, IP20 सामग्री वर्णन/Material Description :LED WALL LAMP,12W, IP20	14 Number	28.11.2025
11400	सामग्री सं./ Material Number :- 150000000000077102 SEARCH LIGHT 1KW,IP55 सामग्री वर्णन/Material Description :SEARCH LIGHT 1KW,IP55	1 Number	28.11.2025
11500	सामग्री सं./ Material Number :- 150000000000077103 SUEZ CANAL SEARCH LIGHT , 3KW. IP 55 सामग्री वर्णन/Material Description :SUEZ CANAL SEARCH LIGHT , 3KW. IP 55	1 Number	28.11.2025
11600	सामग्री सं./ Material Number :- 150000000000077179 CHART TABLE LIGHT , IP20 सामग्री वर्णन/Material Description :CHART TABLE LIGHT , IP20	1 Number	28.11.2025
11700	सामग्री सं./ Material Number :- 150000000000077107 DAY LIGHT SIGNAL LIGHT, WITH CABLE , PLU सामग्री वर्णन/Material Description :DAY LIGHT SIGNAL LIGHT, WITH CABLE , PLUG, PORTABLE TYPE	1 SET	28.11.2025
11800	सामग्री सं./ Material Number :- 150000000000077109 JUNCTION BOX (WT)	59 Number	28.11.2025

निविदा सं./ Tender No:- 1700000541		निविदा तिथि/ Tender Date:- 27.03.2024		आरएफक्यू सं./RFQ No:- 2230000032	
क्र सं. SL.No.	सामग्री / सेवा विवरण Material / Service Details	मात्रा / इकाई Quantity / unit	आपूर्ति तिथि Delivery Date		
सामग्री वर्णन/Material Description :JUNCTION BOX (WT)					
11900	सामग्री सं./ Material Number :- 150000000000077110 JUNCTION BOX (NWT)	67 Number	28.11.2025	सामग्री वर्णन/Material Description :JUNCTION BOX (NWT)	
12000	SERVICE OF TECHNICAL ASSISTANCE The Line item 12000 covers the following services	1 Activity unit	27.02.2026		
000000001 0	सेवा सं./Service Number :- संक्षिप्त वर्णन/Short Description :- SERVICE OF TECHNICAL ASSISTANCE	1 Activity unit			
12100	सामग्री सं./ Material Number :- 150000000000077071 LED LIGHT FITTING FLUSH TYPE, 25W, IP 20	99 Number	30.01.2026	सामग्री वर्णन/Material Description :LED LIGHT FITTING FLUSH TYPE, 25W, IP 20	
12200	सामग्री सं./ Material Number :- 150000000000077074 LED LIGHT FITTING SURFACE TYPE, 22W, IP	80 Number	30.01.2026	सामग्री वर्णन/Material Description :LED LIGHT FITTING SURFACE TYPE, 22W, IP 55	
12300	सामग्री सं./ Material Number :- 150000000000077076 LED LIGHT FITTING SURFACE TYPE, 22W, EX	5 Number	30.01.2026	सामग्री वर्णन/Material Description :LED LIGHT FITTING SURFACE TYPE, 22W, EXPLOSION PROOF	
12400	सामग्री सं./ Material Number :- 150000000000077075 LED LIGHT FITTING SURFACE TYPE, 22W, IP	78 Number	30.01.2026	सामग्री वर्णन/Material Description :LED LIGHT FITTING SURFACE TYPE, 22W, IP 22	
12500	सामग्री सं./ Material Number :- 150000000000077079 LED PENDENT LIGHT FITTING, 20W, IP55	62 Number	30.01.2026	सामग्री वर्णन/Material Description :LED PENDENT LIGHT FITTING, 20W, IP55	
12600	सामग्री सं./ Material Number :- 150000000000077081 WORKSHOP LIFHT FITTING WITH FLEXIBLE ARM	3 SET	30.01.2026	सामग्री वर्णन/Material Description :WORKSHOP LIGHT FITTING WITH FLEXIBLE ARM & ON/OFF SWITCH , 15W	

क्र सं. SL.No.	सामग्री / सेवा विवरण Material / Service Details	मात्रा / इकाई Quantity / unit	आपूर्ति तिथि Delivery Date
12700	सामग्री सं./ Material Number :- 150000000000077082 LED FLOOD LIGHT 100W, IPN 22 सामग्री वर्णन/Material Description :LED FLOOD LIGHT 100W, IPN 22	4 Number	30.01.2026
12800	सामग्री सं./ Material Number :- 150000000000077083 LED PENDENT LIGHT FITTING, 20W, IP20 सामग्री वर्णन/Material Description :LED PENDENT LIGHT FITTING, 20W, IP20	8 Number	30.01.2026
12900	सामग्री सं./ Material Number :- 150000000000077084 LED LIGHT FITTING,PENDANT TYPE , 20W, EX सामग्री वर्णन/Material Description :LED LIGHT FITTING,PENDANT TYPE , 20W, EXPLOSION PROOF	32 Number	30.01.2026
13000	सामग्री सं./ Material Number :- 150000000000077085 DESK LIGHT 8 W (STAND TYPE ,W/SWITCH,PLU सामग्री वर्णन/Material Description :DESK LIGHT 8 W (STAND TYPE ,W/SWITCH,PLUG & CABLE)	15 SET	30.01.2026
13100	सामग्री सं./ Material Number :- 150000000000077088 LED FLOOD LIGHT FOR CARGO HOLD ,150W, EX सामग्री वर्णन/Material Description :LED FLOOD LIGHT FOR CARGO HOLD ,150W, EXPLOSION PROOF	12 Number	30.01.2026
13200	सामग्री सं./ Material Number :- 150000000000077090 LED FLOOD LIGHT 100W, IP55 सामग्री वर्णन/Material Description :LED FLOOD LIGHT 100W, IP55	24 Number	30.01.2026
13300	सामग्री सं./ Material Number :- 150000000000077091 LED BIRTH LIGHT , 8W, IP20 सामग्री वर्णन/Material Description :LED BIRTH LIGHT , 8W, IP20	13 Number	30.01.2026
13400	सामग्री सं./ Material Number :- 150000000000077093 GOOSE NECK LIGHTS WITH DIMMING FACILITY सामग्री वर्णन/Material Description :GOOSE NECK LIGHTS WITH DIMMING FACILITY	3 Number	30.01.2026
13500	सामग्री सं./ Material Number :- 150000000000077097 DOOR LIMIT SWITCH सामग्री वर्णन/Material Description :DOOR LIMIT SWITCH	1 Number	30.01.2026
13600	सामग्री सं./ Material Number :- 150000000000077178	5 Number	30.01.2026

निविदा सं./ Tender No:- 1700000541		निविदा तिथि/ Tender Date:- 27.03.2024		आरएफक्यू सं./RFQ No:- 2230000032	
क्र सं. SL.No.	सामग्री / सेवा विवरण Material / Service Details	मात्रा / इकाई Quantity / unit	आपूर्ति तिथि Delivery Date		
	MIRROR LIGHT,W/SOCKET, & ON/OFF SWITCH) सामग्री वर्णन/Material Description :MIRROR LIGHT,W/SOCKET, & ON/OFF SWITCH)				
13700	सामग्री सं./ Material Number :- 150000000000077101 LED WALL LAMP,12W, IP20 सामग्री वर्णन/Material Description :LED WALL LAMP,12W, IP20	14 Number	30.01.2026		
13800	सामग्री सं./ Material Number :- 150000000000077102 SEARCH LIGHT 1KW,IP55 सामग्री वर्णन/Material Description :SEARCH LIGHT 1KW,IP55	1 Number	30.01.2026		
13900	सामग्री सं./ Material Number :- 150000000000077103 SUEZ CANAL SEARCH LIGHT , 3KW. IP 55 सामग्री वर्णन/Material Description :SUEZ CANAL SEARCH LIGHT , 3KW. IP 55	1 Number	30.01.2026		
14000	सामग्री सं./ Material Number :- 150000000000077179 CHART TABLE LIGHT , IP20 सामग्री वर्णन/Material Description :CHART TABLE LIGHT , IP20	1 Number	30.01.2026		
14100	सामग्री सं./ Material Number :- 150000000000077107 DAY LIGHT SIGNAL LIGHT, WITH CABLE , PLU सामग्री वर्णन/Material Description :DAY LIGHT SIGNAL LIGHT, WITH CABLE , PLUG, PORTABLE TYPE	1 SET	30.01.2026		
14200	सामग्री सं./ Material Number :- 150000000000077109 JUNCTION BOX (WT) सामग्री वर्णन/Material Description :JUNCTION BOX (WT)	59 Number	30.01.2026		
14300	सामग्री सं./ Material Number :- 150000000000077110 JUNCTION BOX (NWT) सामग्री वर्णन/Material Description :JUNCTION BOX (NWT)	67 Number	30.01.2026		
14400	SERVICE OF TECHNICAL ASSISTANCE The Line item 14400 covers the following services	1 Activity unit	30.04.2026		
000000001 0	सेवा सं./Service Number :- संक्षिप्त वर्णन/Short Description :- SERVICE OF TECHNICAL ASSISTANCE	1 Activity unit			
14500	सामग्री सं./ Material Number :- 150000000000077071	99 Number	30.07.2027		

क्र सं. SL.No.	सामग्री / सेवा विवरण Material / Service Details	मात्रा / इकाई Quantity / unit	आपूर्ति तिथि Delivery Date
	LED LIGHT FITTING FLUSH TYPE, 25W, IP 20 सामग्री वर्णन/Material Description :LED LIGHT FITTING FLUSH TYPE, 25W, IP 20		
14600	सामग्री सं./ Material Number :- 150000000000077074 LED LIGHT FITTING SURFACE TYPE, 22W, IP सामग्री वर्णन/Material Description :LED LIGHT FITTING SURFACE TYPE, 22W, IP 55	80 Number	30.07.2027
14700	सामग्री सं./ Material Number :- 150000000000077076 LED LIGHT FITTING SURFACE TYPE, 22W, EX सामग्री वर्णन/Material Description :LED LIGHT FITTING SURFACE TYPE, 22W, EXPLOSION PROOF	5 Number	30.07.2027
14800	सामग्री सं./ Material Number :- 150000000000077075 LED LIGHT FITTING SURFACE TYPE, 22W, IP सामग्री वर्णन/Material Description :LED LIGHT FITTING SURFACE TYPE, 22W, IP 22	78 Number	30.07.2027
14900	सामग्री सं./ Material Number :- 150000000000077079 LED PENDENT LIGHT FITTING, 20W, IP55 सामग्री वर्णन/Material Description :LED PENDENT LIGHT FITTING, 20W, IP55	62 Number	30.07.2027
15000	सामग्री सं./ Material Number :- 150000000000077081 WORKSHOP LIFHT FITTING WITH FLEXIBLE ARM सामग्री वर्णन/Material Description :WORKSHOP LIGHT FITTING WITH FLEXIBLE ARM & ON/OFF SWITCH , 15W	3 SET	30.07.2027
15100	सामग्री सं./ Material Number :- 150000000000077082 LED FLOOD LIGHT 100W, IPN 22 सामग्री वर्णन/Material Description :LED FLOOD LIGHT 100W, IPN 22	4 Number	30.07.2027
15200	सामग्री सं./ Material Number :- 150000000000077083 LED PENDENT LIGHT FITTING, 20W, IP20 सामग्री वर्णन/Material Description :LED PENDENT LIGHT FITTING, 20W, IP20	8 Number	30.07.2027
15300	सामग्री सं./ Material Number :- 150000000000077084 LED LIGHT FITTING,PENDANT TYPE , 20W, EX सामग्री वर्णन/Material Description :LED LIGHT FITTING,PENDANT TYPE , 20W, EXPLOSION PROOF	32 Number	30.07.2027

क्र सं. SL.No.	सामग्री / सेवा विवरण Material / Service Details	मात्रा / इकाई Quantity / unit	आपूर्ति तिथि Delivery Date
15400	सामग्री सं./ Material Number :- 150000000000077085 DESK LIGHT 8 W (STAND TYPE ,W/SWITCH,PLU सामग्री वर्णन/Material Description :DESK LIGHT 8 W (STAND TYPE ,W/SWITCH,PLUG & CABLE)	15 SET	30.07.2027
15500	सामग्री सं./ Material Number :- 150000000000077088 LED FLOOD LIGHT FOR CARGO HOLD ,150W, EX सामग्री वर्णन/Material Description :LED FLOOD LIGHT FOR CARGO HOLD ,150W, EXPLOSION PROOF	12 Number	30.07.2027
15600	सामग्री सं./ Material Number :- 150000000000077090 LED FLOOD LIGHT 100W, IP55 सामग्री वर्णन/Material Description :LED FLOOD LIGHT 100W, IP55	24 Number	30.07.2027
15700	सामग्री सं./ Material Number :- 150000000000077091 LED BIRTH LIGHT , 8W, IP20 सामग्री वर्णन/Material Description :LED BIRTH LIGHT , 8W, IP20	13 Number	30.07.2027
15800	सामग्री सं./ Material Number :- 150000000000077093 GOOSE NECK LIGHTS WITH DIMMING FACILITY सामग्री वर्णन/Material Description :GOOSE NECK LIGHTS WITH DIMMING FACILITY	3 Number	30.07.2027
15900	सामग्री सं./ Material Number :- 150000000000077097 DOOR LIMIT SWITCH सामग्री वर्णन/Material Description :DOOR LIMIT SWITCH	1 Number	30.07.2027
16000	सामग्री सं./ Material Number :- 150000000000077178 MIRROR LIGHT,W/SOCKET, & ON/OFF SWITCH) सामग्री वर्णन/Material Description :MIRROR LIGHT,W/SOCKET, & ON/OFF SWITCH)	5 Number	30.07.2027
16100	सामग्री सं./ Material Number :- 150000000000077101 LED WALL LAMP,12W, IP20 सामग्री वर्णन/Material Description :LED WALL LAMP,12W, IP20	14 Number	30.07.2027
16200	सामग्री सं./ Material Number :- 150000000000077102 SEARCH LIGHT 1KW,IP55 सामग्री वर्णन/Material Description :SEARCH LIGHT 1KW,IP55	1 Number	30.07.2027
16300	सामग्री सं./ Material Number :- 150000000000077103 SUEZ CANAL SEARCH LIGHT , 3KW. IP 55	1 Number	30.07.2027

क्र सं. SL.No.	सामग्री / सेवा विवरण Material / Service Details	मात्रा / इकाई Quantity / unit	आपूर्ति तिथि Delivery Date
सामग्री वर्णन/Material Description :SUEZ CANAL SEARCH LIGHT , 3KW. IP 55			
16400	सामग्री सं./ Material Number :- 150000000000077179 CHART TABLE LIGHT , IP20 सामग्री वर्णन/Material Description :CHART TABLE LIGHT , IP20	1 Number	30.07.2027
16500	सामग्री सं./ Material Number :- 150000000000077107 DAY LIGHT SIGNAL LIGHT, WITH CABLE , PLU सामग्री वर्णन/Material Description :DAY LIGHT SIGNAL LIGHT, WITH CABLE , PLUG, PORTABLE TYPE	1 SET	30.07.2027
16600	सामग्री सं./ Material Number :- 150000000000077109 JUNCTION BOX (WT) सामग्री वर्णन/Material Description :JUNCTION BOX (WT)	59 Number	30.07.2027
16700	सामग्री सं./ Material Number :- 150000000000077110 JUNCTION BOX (NWT) सामग्री वर्णन/Material Description :JUNCTION BOX (NWT)	67 Number	30.07.2027
16800	SERVICE OF TECHNICAL ASSISTANCE The Line item 16800 covers the following services	1 Activity unit	29.10.2027
000000001 0	सेवा सं./Service Number :- संक्षिप्त वर्णन/Short Description :- SERVICE OF TECHNICAL ASSISTANCE	1 Activity unit	
16900	सामग्री सं./ Material Number :- 150000000000077071 LED LIGHT FITTING FLUSH TYPE, 25W, IP 20 सामग्री वर्णन/Material Description :LED LIGHT FITTING FLUSH TYPE, 25W, IP 20	99 Number	30.07.2027
17000	सामग्री सं./ Material Number :- 150000000000077074 LED LIGHT FITTING SURFACE TYPE, 22W, IP सामग्री वर्णन/Material Description :LED LIGHT FITTING SURFACE TYPE, 22W, IP 55	80 Number	30.07.2027
17100	सामग्री सं./ Material Number :- 150000000000077076 LED LIGHT FITTING SURFACE TYPE, 22W, EX सामग्री वर्णन/Material Description :LED LIGHT FITTING SURFACE TYPE, 22W, EXPLOSION PROOF	5 Number	30.07.2027

क्र सं. SL.No.	सामग्री / सेवा विवरण Material / Service Details	मात्रा / इकाई Quantity / unit	आपूर्ति तिथि Delivery Date
17200	सामग्री सं./ Material Number :- 15000000000077075 LED LIGHT FITTING SURFACE TYPE, 22W, IP सामग्री वर्णन/Material Description :LED LIGHT FITTING SURFACE TYPE, 22W, IP 22	78 Number	30.07.2027
17300	सामग्री सं./ Material Number :- 15000000000077079 LED PENDENT LIGHT FITTING, 20W, IP55 सामग्री वर्णन/Material Description :LED PENDENT LIGHT FITTING, 20W, IP55	62 Number	30.07.2027
17400	सामग्री सं./ Material Number :- 15000000000077081 WORKSHOP LIFHT FITTING WITH FLEXIBLE ARM सामग्री वर्णन/Material Description :WORKSHOP LIGHT FITTING WITH FLEXIBLE ARM & ON/OFF SWITCH , 15W	3 SET	30.07.2027
17500	सामग्री सं./ Material Number :- 15000000000077082 LED FLOOD LIGHT 100W, IPN 22 सामग्री वर्णन/Material Description :LED FLOOD LIGHT 100W, IPN 22	4 Number	30.07.2027
17600	सामग्री सं./ Material Number :- 15000000000077083 LED PENDENT LIGHT FITTING, 20W, IP20 सामग्री वर्णन/Material Description :LED PENDENT LIGHT FITTING, 20W, IP20	8 Number	30.07.2027
17700	सामग्री सं./ Material Number :- 15000000000077084 LED LIGHT FITTING,PENDANT TYPE , 20W, EX सामग्री वर्णन/Material Description :LED LIGHT FITTING,PENDANT TYPE , 20W, EXPLOSION PROOF	32 Number	30.07.2027
17800	सामग्री सं./ Material Number :- 15000000000077085 DESK LIGHT 8 W (STAND TYPE ,W/SWITCH,PLU सामग्री वर्णन/Material Description :DESK LIGHT 8 W (STAND TYPE ,W/SWITCH,PLUG & CABLE)	15 SET	30.07.2027
17900	सामग्री सं./ Material Number :- 15000000000077088 LED FLOOD LIGHT FOR CARGO HOLD ,150W, EX सामग्री वर्णन/Material Description :LED FLOOD LIGHT FOR CARGO HOLD ,150W, EXPLOSION PROOF	12 Number	30.07.2027
18000	सामग्री सं./ Material Number :- 15000000000077090 LED FLOOD LIGHT 100W, IP55 सामग्री वर्णन/Material Description :LED FLOOD LIGHT 100W, IP55	24 Number	30.07.2027

क्र सं. SL.No.	सामग्री / सेवा विवरण Material / Service Details	मात्रा / इकाई Quantity / unit	आपूर्ति तिथि Delivery Date
18100	सामग्री सं./ Material Number :- 150000000000077091 LED BIRTH LIGHT , 8W, IP20 सामग्री वर्णन/Material Description :LED BIRTH LIGHT , 8W, IP20	13 Number	30.07.2027
18200	सामग्री सं./ Material Number :- 150000000000077093 GOOSE NECK LIGHTS WITH DIMMING FACILITY सामग्री वर्णन/Material Description :GOOSE NECK LIGHTS WITH DIMMING FACILITY	3 Number	30.07.2027
18300	सामग्री सं./ Material Number :- 150000000000077097 DOOR LIMIT SWITCH सामग्री वर्णन/Material Description :DOOR LIMIT SWITCH	1 Number	30.07.2027
18400	सामग्री सं./ Material Number :- 150000000000077178 MIRROR LIGHT,W/SOCKET, & ON/OFF SWITCH) सामग्री वर्णन/Material Description :MIRROR LIGHT,W/SOCKET, & ON/OFF SWITCH)	5 Number	30.07.2027
18500	सामग्री सं./ Material Number :- 150000000000077101 LED WALL LAMP,12W, IP20 सामग्री वर्णन/Material Description :LED WALL LAMP,12W, IP20	14 Number	30.07.2027
18600	सामग्री सं./ Material Number :- 150000000000077102 SEARCH LIGHT 1KW,IP55 सामग्री वर्णन/Material Description :SEARCH LIGHT 1KW,IP55	1 Number	30.07.2027
18700	सामग्री सं./ Material Number :- 150000000000077103 SUEZ CANAL SEARCH LIGHT , 3KW. IP 55 सामग्री वर्णन/Material Description :SUEZ CANAL SEARCH LIGHT , 3KW. IP 55	1 Number	30.07.2027
18800	सामग्री सं./ Material Number :- 150000000000077179 CHART TABLE LIGHT , IP20 सामग्री वर्णन/Material Description :CHART TABLE LIGHT , IP20	1 Number	30.07.2027
18900	सामग्री सं./ Material Number :- 150000000000077107 DAY LIGHT SIGNAL LIGHT, WITH CABLE , PLU सामग्री वर्णन/Material Description :DAY LIGHT SIGNAL LIGHT, WITH CABLE , PLUG, PORTABLE TYPE	1 SET	30.07.2027
19000	सामग्री सं./ Material Number :- 150000000000077109	59 Number	30.07.2027

क्र सं. SL.No.	सामग्री / सेवा विवरण Material / Service Details	मात्रा / इकाई Quantity / unit	आपूर्ति तिथि Delivery Date
	JUNCTION BOX (WT) सामग्री वर्णन/Material Description :JUNCTION BOX (WT)		
19100	सामग्री सं./ Material Number :- 150000000000077110 JUNCTION BOX (NWT) सामग्री वर्णन/Material Description :JUNCTION BOX (NWT)	67 Number	30.07.2027
19200	SERVICE OF TECHNICAL ASSISTANCE The Line item 19200 covers the following services	1 Activity unit	29.10.2027
000000001 0	सेवा सं./Service Number :- संक्षिप्त वर्णन/Short Description :- SERVICE OF TECHNICAL ASSISTANCE	1 Activity unit	
19300	सामग्री सं./ Material Number :- 150000000000077071 LED LIGHT FITTING FLUSH TYPE, 25W, IP 20 सामग्री वर्णन/Material Description :LED LIGHT FITTING FLUSH TYPE, 25W, IP 20	99 Number	30.07.2027
19400	सामग्री सं./ Material Number :- 150000000000077074 LED LIGHT FITTING SURFACE TYPE, 22W, IP सामग्री वर्णन/Material Description :LED LIGHT FITTING SURFACE TYPE, 22W, IP 55	80 Number	30.07.2027
19500	सामग्री सं./ Material Number :- 150000000000077076 LED LIGHT FITTING SURFACE TYPE, 22W, EX सामग्री वर्णन/Material Description :LED LIGHT FITTING SURFACE TYPE, 22W, EXPLOSION PROOF	5 Number	30.07.2027
19600	सामग्री सं./ Material Number :- 150000000000077075 LED LIGHT FITTING SURFACE TYPE, 22W, IP सामग्री वर्णन/Material Description :LED LIGHT FITTING SURFACE TYPE, 22W, IP 22	78 Number	30.07.2027
19700	सामग्री सं./ Material Number :- 150000000000077079 LED PENDENT LIGHT FITTING, 20W, IP55 सामग्री वर्णन/Material Description :LED PENDENT LIGHT FITTING, 20W, IP55	62 Number	30.07.2027
19800	सामग्री सं./ Material Number :- 150000000000077081 WORKSHOP LIFHT FITTING WITH FLEXIBLE ARM सामग्री वर्णन/Material Description :WORKSHOP LIGHT FITTING WITH FLEXIBLE ARM & ON/OFF SWITCH , 15W	3 SET	30.07.2027

क्र सं. SL.No.	सामग्री / सेवा विवरण Material / Service Details	मात्रा / इकाई Quantity / unit	आपूर्ति तिथि Delivery Date
19900	सामग्री सं./ Material Number :- 150000000000077082 LED FLOOD LIGHT 100W, IPN 22 सामग्री वर्णन/Material Description :LED FLOOD LIGHT 100W, IPN 22	4 Number	30.07.2027
20000	सामग्री सं./ Material Number :- 150000000000077083 LED PENDENT LIGHT FITTING, 20W, IP20 सामग्री वर्णन/Material Description :LED PENDENT LIGHT FITTING, 20W, IP20	8 Number	30.07.2027
20100	सामग्री सं./ Material Number :- 150000000000077084 LED LIGHT FITTING,PENDANT TYPE , 20W, EX सामग्री वर्णन/Material Description :LED LIGHT FITTING,PENDANT TYPE , 20W, EXPLOSION PROOF	32 Number	30.07.2027
20200	सामग्री सं./ Material Number :- 150000000000077085 DESK LIGHT 8 W (STAND TYPE ,W/SWITCH,PLU सामग्री वर्णन/Material Description :DESK LIGHT 8 W (STAND TYPE ,W/SWITCH,PLUG & CABLE)	15 SET	30.07.2027
20300	सामग्री सं./ Material Number :- 150000000000077088 LED FLOOD LIGHT FOR CARGO HOLD ,150W, EX सामग्री वर्णन/Material Description :LED FLOOD LIGHT FOR CARGO HOLD ,150W, EXPLOSION PROOF	12 Number	30.07.2027
20400	सामग्री सं./ Material Number :- 150000000000077090 LED FLOOD LIGHT 100W, IP55 सामग्री वर्णन/Material Description :LED FLOOD LIGHT 100W, IP55	24 Number	30.07.2027
20500	सामग्री सं./ Material Number :- 150000000000077091 LED BIRTH LIGHT , 8W, IP20 सामग्री वर्णन/Material Description :LED BIRTH LIGHT , 8W, IP20	13 Number	30.07.2027
20600	सामग्री सं./ Material Number :- 150000000000077093 GOOSE NECK LIGHTS WITH DIMMING FACILITY सामग्री वर्णन/Material Description :GOOSE NECK LIGHTS WITH DIMMING FACILITY	3 Number	30.07.2027
20700	सामग्री सं./ Material Number :- 150000000000077097 DOOR LIMIT SWITCH सामग्री वर्णन/Material Description :DOOR LIMIT SWITCH	1 Number	30.07.2027

क्र सं. SL.No.	सामग्री / सेवा विवरण Material / Service Details	मात्रा / इकाई Quantity / unit	आपूर्ति तिथि Delivery Date
20800	सामग्री सं./ Material Number :- 150000000000077178 MIRROR LIGHT,W/SOCKET, & ON/OFF SWITCH) सामग्री वर्णन/Material Description :MIRROR LIGHT,W/SOCKET, & ON/OFF SWITCH)	5 Number	30.07.2027
20900	सामग्री सं./ Material Number :- 150000000000077101 LED WALL LAMP,12W, IP20 सामग्री वर्णन/Material Description :LED WALL LAMP,12W, IP20	14 Number	30.07.2027
21000	सामग्री सं./ Material Number :- 150000000000077102 SEARCH LIGHT 1KW,IP55 सामग्री वर्णन/Material Description :SEARCH LIGHT 1KW,IP55	1 Number	30.07.2027
21100	सामग्री सं./ Material Number :- 150000000000077103 SUEZ CANAL SEARCH LIGHT , 3KW. IP 55 सामग्री वर्णन/Material Description :SUEZ CANAL SEARCH LIGHT , 3KW. IP 55	1 Number	30.07.2027
21200	सामग्री सं./ Material Number :- 150000000000077179 CHART TABLE LIGHT , IP20 सामग्री वर्णन/Material Description :CHART TABLE LIGHT , IP20	1 Number	30.07.2027
21300	सामग्री सं./ Material Number :- 150000000000077107 DAY LIGHT SIGNAL LIGHT, WITH CABLE , PLU सामग्री वर्णन/Material Description :DAY LIGHT SIGNAL LIGHT, WITH CABLE , PLUG, PORTABLE TYPE	1 SET	30.07.2027
21400	सामग्री सं./ Material Number :- 150000000000077109 JUNCTION BOX (WT) सामग्री वर्णन/Material Description :JUNCTION BOX (WT)	59 Number	30.07.2027
21500	सामग्री सं./ Material Number :- 150000000000077110 JUNCTION BOX (NWT) सामग्री वर्णन/Material Description :JUNCTION BOX (NWT)	67 Number	30.07.2027
21600	SERVICE OF TECHNICAL ASSISTANCE The Line item 21600 covers the following services	1 Activity unit	29.10.2027
000000001 0	सेवा सं./Service Number :- संक्षिप्त वर्णन/Short Description :- SERVICE OF TECHNICAL ASSISTANCE	1 Activity unit	

क्र सं. SL.No.	सामग्री / सेवा विवरण Material / Service Details	मात्रा / इकाई Quantity / unit	आपूर्ति तिथि Delivery Date
21700	सामग्री सं./ Material Number :- 15000000000077071 LED LIGHT FITTING FLUSH TYPE, 25W, IP 20 सामग्री वर्णन/Material Description :LED LIGHT FITTING FLUSH TYPE, 25W, IP 20	99 Number	30.07.2027
21800	सामग्री सं./ Material Number :- 15000000000077074 LED LIGHT FITTING SURFACE TYPE, 22W, IP सामग्री वर्णन/Material Description :LED LIGHT FITTING SURFACE TYPE, 22W, IP 55	80 Number	30.07.2027
21900	सामग्री सं./ Material Number :- 15000000000077076 LED LIGHT FITTING SURFACE TYPE, 22W, EX सामग्री वर्णन/Material Description :LED LIGHT FITTING SURFACE TYPE, 22W, EXPLOSION PROOF	5 Number	30.07.2027
22000	सामग्री सं./ Material Number :- 15000000000077075 LED LIGHT FITTING SURFACE TYPE, 22W, IP सामग्री वर्णन/Material Description :LED LIGHT FITTING SURFACE TYPE, 22W, IP 22	78 Number	30.07.2027
22100	सामग्री सं./ Material Number :- 15000000000077079 LED PENDENT LIGHT FITTING, 20W, IP55 सामग्री वर्णन/Material Description :LED PENDENT LIGHT FITTING, 20W, IP55	62 Number	30.07.2027
22200	सामग्री सं./ Material Number :- 15000000000077081 WORKSHOP LIFHT FITTING WITH FLEXIBLE ARM सामग्री वर्णन/Material Description :WORKSHOP LIGHT FITTING WITH FLEXIBLE ARM & ON/OFF SWITCH , 15W	3 SET	30.07.2027
22300	सामग्री सं./ Material Number :- 15000000000077082 LED FLOOD LIGHT 100W, IPN 22 सामग्री वर्णन/Material Description :LED FLOOD LIGHT 100W, IPN 22	4 Number	30.07.2027
22400	सामग्री सं./ Material Number :- 15000000000077083 LED PENDENT LIGHT FITTING, 20W, IP20 सामग्री वर्णन/Material Description :LED PENDENT LIGHT FITTING, 20W, IP20	8 Number	30.07.2027
22500	सामग्री सं./ Material Number :- 15000000000077084 LED LIGHT FITTING,PENDANT TYPE , 20W, EX सामग्री वर्णन/Material Description :LED LIGHT FITTING,PENDANT TYPE , 20W, EXPLOSION PROOF	32 Number	30.07.2027

क्र सं. SL.No.	सामग्री / सेवा विवरण Material / Service Details	मात्रा / इकाई Quantity / unit	आपूर्ति तिथि Delivery Date
22600	सामग्री सं./ Material Number :- 150000000000077085 DESK LIGHT 8 W (STAND TYPE ,W/SWITCH,PLU सामग्री वर्णन/Material Description :DESK LIGHT 8 W (STAND TYPE ,W/SWITCH,PLUG & CABLE)	15 SET	30.07.2027
22700	सामग्री सं./ Material Number :- 150000000000077088 LED FLOOD LIGHT FOR CARGO HOLD ,150W, EX सामग्री वर्णन/Material Description :LED FLOOD LIGHT FOR CARGO HOLD ,150W, EXPLOSION PROOF	12 Number	30.07.2027
22800	सामग्री सं./ Material Number :- 150000000000077090 LED FLOOD LIGHT 100W, IP55 सामग्री वर्णन/Material Description :LED FLOOD LIGHT 100W, IP55	24 Number	30.07.2027
22900	सामग्री सं./ Material Number :- 150000000000077091 LED BIRTH LIGHT , 8W, IP20 सामग्री वर्णन/Material Description :LED BIRTH LIGHT , 8W, IP20	13 Number	30.07.2027
23000	सामग्री सं./ Material Number :- 150000000000077093 GOOSE NECK LIGHTS WITH DIMMING FACILITY सामग्री वर्णन/Material Description :GOOSE NECK LIGHTS WITH DIMMING FACILITY	3 Number	30.07.2027
23100	सामग्री सं./ Material Number :- 150000000000077097 DOOR LIMIT SWITCH सामग्री वर्णन/Material Description :DOOR LIMIT SWITCH	1 Number	30.07.2027
23200	सामग्री सं./ Material Number :- 150000000000077178 MIRROR LIGHT,W/SOCKET, & ON/OFF SWITCH) सामग्री वर्णन/Material Description :MIRROR LIGHT,W/SOCKET, & ON/OFF SWITCH)	5 Number	30.07.2027
23300	सामग्री सं./ Material Number :- 150000000000077101 LED WALL LAMP,12W, IP20 सामग्री वर्णन/Material Description :LED WALL LAMP,12W, IP20	14 Number	30.07.2027
23400	सामग्री सं./ Material Number :- 150000000000077102 SEARCH LIGHT 1KW,IP55 सामग्री वर्णन/Material Description :SEARCH LIGHT 1KW,IP55	1 Number	30.07.2027
23500	सामग्री सं./ Material Number :- 150000000000077103	1 Number	30.07.2027

क्र सं. SL.No.	सामग्री / सेवा विवरण Material / Service Details	मात्रा / इकाई Quantity / unit	आपूर्ति तिथि Delivery Date
	SUEZ CANAL SEARCH LIGHT , 3KW. IP 55 सामग्री वर्णन/Material Description :SUEZ CANAL SEARCH LIGHT , 3KW. IP 55		
23600	सामग्री सं./ Material Number :- 150000000000077179 CHART TABLE LIGHT , IP20 सामग्री वर्णन/Material Description :CHART TABLE LIGHT , IP20	1 Number	30.07.2027
23700	सामग्री सं./ Material Number :- 150000000000077107 DAY LIGHT SIGNAL LIGHT, WITH CABLE , PLU सामग्री वर्णन/Material Description :DAY LIGHT SIGNAL LIGHT, WITH CABLE , PLUG, PORTABLE TYPE	1 SET	30.07.2027
23800	सामग्री सं./ Material Number :- 150000000000077109 JUNCTION BOX (WT) सामग्री वर्णन/Material Description :JUNCTION BOX (WT)	59 Number	30.07.2027
23900	सामग्री सं./ Material Number :- 150000000000077110 JUNCTION BOX (NWT) सामग्री वर्णन/Material Description :JUNCTION BOX (NWT)	67 Number	30.07.2027
24000	SERVICE OF TECHNICAL ASSISTANCE The Line item 24000 covers the following services	1 Activity unit	29.10.2027
0000000010	सेवा सं./Service Number :- संक्षिप्त वर्णन/Short Description :- SERVICE OF TECHNICAL ASSISTANCE	1 Activity unit	

नियम और शर्तें : भाग ए में लिखी हुई और इतर संलग्नपत्रे इस निविदा एक अभिन्न अंग हैं |हमें आशा है की,हमें प्रतियोगित्मिक और उचित प्रस्ताव इस निविदा के लिए प्राप्त होगा |
Terms & Conditions as indicated in Part A of this tender and other enclosures / annexures form an integral part of this tender document. We look forward to receive your most competitive and reasonable offer against this Tender.

माझगाँव डॉक शिपबिल्डर्स लिमिटेड के लिए /For Mazagon Dock Shipbuilders Ltd

Tender No. 170000541 (Nominated Limited Global Tender Enquiry)



Tender Enquiry

Enclosure to Tender Enquiry: Terms and Conditions (Section I & II)
Item: Supply of Ship Illumination and Deck Lighting for project 7500
DWT multipurpose dry cargo vessel
Project: Multi-Purpose Dry Cargo Vessel(MPV)

Section I - Notice Inviting Tender (NIT)

- (i) Notice Inviting Tender (NIT): Mazagon Dock Shipbuilders Limited (MDL), Mumbai is India's leading Shipbuilding Company with ISO 9001:2015 accreditation. Mazagon Dock Shipbuilders Limited, invites offers in two bid system i.e. Part-I (Techno Commercial Bid) and Part-II (Price Bid) from Indian/Foreign nominated bidders through online bidding via MDL e-procurement portal (<https://eprocuremdl.nic.in>) for Item/Services.
- (ii) **The Tender Document:**
- (i) **Bidders must read the complete 'Tender Document'**. Kindly visit MDL website Link : <https://mazagondock.in/English/pages/Tenders> under tab Ship Building(SB)/MPV Project for formats as detailed in enclosure.
- (ii) Bids must be uploaded till the deadline for submission of bids. Request for extension, if at all to be made, shall be forwarded at least 3 working days in advance to the tender closing date / time (excluding tender closing date) with proper reasoning. **However, the extension would be granted by MDL on merit of the case at MDL discretion and would be binding on all bidders.**
- (iii) **Eligibility Criteria for Participation in this Tender:** Subject to provisions in the Tender Document, participation in this Tender Process is limited to nominated bidders who fulfil the 'Eligibility' and Pre-Qualification criteria. Bidder shall be required to declare fulfilment of Eligibility Criteria.
Note: Incase manufacturer has submitted the bid, then bids of its authorised dealer will not be considered.
- (iv) **Submission of Bids:** No manual Bids shall be made available or accepted for submission (except for originals of scanned copies as mentioned in tender). Bidder must comply with the conditions of the eProcurement portal, including registration, compatible Digital Signature Certificate (DSC) etc. In the case of downloaded documents, Bidder must not make any changes to the contents of the documents while uploading, except for filling in the required information.
- (v) **Disclaimers and Rights of MDL:** The issue of the Tender Document does not imply that MDL is bound to select bid(s), and it reserves the right without assigning any reason to
- reject any or all of the Bids, or
 - cancel the tender process; or
 - abandon the procurement of the Goods/Services in partial or full; or
 - issue another tender for identical or similar Goods/Services.

Note: Please refer to appended complete Tender Document for further details.

Tender Inviting Authority

Tender No. 170000541 (Nominated Limited Global Tender Enquiry)

Section II - Tender Enquiry Form (TEF)

1. **Description & Scope of Supply / Work:** Supply of Ship Illumination and Deck Lighting for project 7500 DWT Multipurpose dry cargo vessel as per Tender & TSP NO - DR/EL/MPV/5015.

Note:

- a. From Sr No 14500 to 24000 of BOQ (Price Bid) are optional requirement for placement of order by MDL at later date latest by Dec 2026.
- b. In case MDL intends to buy 04 more ship sets (2 nos + 2 nos) of this scope, bidders shall quote their price for additional shipsets (04 nos) with price validity up to Dec 26 in the price sheet attached with the tender.
- c. Bidder should note that quote for additional 4 shipsets will be considered for ranking purpose.
- d. Bidders shall not claim for this requirement in case this clause is not being exercised.
- e. Placement of order for additional 4 shipsets (2 set + 2Sets) will be at MDL discretions.

2. **Validity Period of Offer:**

- (a) Bid / Offer shall have the validity period of **180 days** from the tender closing date for first 06 shipsets and for additional 04 shipsets price shall be valid up to **Dec 26**.
- (b) MDL may request the bidders to extend the validity period for a specified additional period. A bidder may agree to or reject the request. A bidder who has agreed to MDL's request for extension of bid validity, in no case, he shall be permitted to modify his bid. In case techno-commercially accepted bidder/s does not agree to extend the offer validity, the offers of all techno commercially accepted bidder/s including the bidder who has not agreed to extend their offer validity shall be opened and proceed further with valid bids. However, offer of the bidder(s) who have not agreed to extend their offer validity shall not be considered for L1 evaluation purpose.

3. **Delivery Period:** Delivery timelines shall be as per tender date OR as follows with respect to PO date whichever is later.

Yard No.	Equipment delivery date
21001	PO date + 08 months
21002	PO date + 10 months
21003	PO date + 12 months
21004	PO date + 14 months
21005	PO date + 16 months
21006	PO date + 18 months
21007	PO date + 08 months
21008	PO date + 08 months
21009	PO date + 08 months
21010	PO date + 08 months

For services, the given schedule is tentative, the exact schedule will be communicated 15 days in advance before respective activity.

4. **Submission of Offer in Two Bid System:** Offer must be submitted in two parts as follows:
- a) **Part I (Techno Commercial Bid):** The bidder shall ensure submission of techno-commercial offer as per tender terms.

Note: In any case, prices are not to be mentioned in Part-I bid.

Tender No. 170000541 (Nominated Limited Global Tender Enquiry)

- b) **Part-II (Price Bid):** Prices for each of the listed items has to be uploaded strictly in the prescribed format provided in the e-procurement portal. Bids received other than this given format will be **rejected**.

Note:

- If, in the price structure quoted for the required goods, there is discrepancy between the unit price and total price (which is obtained by multiplying the unit price by the quantity), the unit price shall prevail and the total price corrected accordingly;
- If there is a discrepancy between words and figures, the amount in words shall prevail.
- Bidder must quote for all line items being inseparable line items.

5. Bid Rejection Criteria:

- (a) **Categorical rejection criteria:** Any Bids received other than through e-portal (in case of e-tender) shall be summarily rejected.
- (b) **Liable rejection criteria:** Non-compliance/non-acceptance to any of the terms and conditions of the tender shall render the bid liable for rejection.

6. Performance Security Bank Guarantee(PSBG):

- (i) Separate Performance Security(PS) for an amount equal to 5% of each order value (excluding taxes, duties) payable in currency of purchase order shall be submitted within 25 days after notification of the award of contract and it should remain valid for a period of 60 (sixty) days beyond the date of completion of all contractual obligations of the supplier, including warranty obligations.
- (ii) Performance security may be furnished in the form of NEFT /Online (MDL website) Demand Draft / Pay order / Bank Guarantee / Insurance Security Bond / e-Bank Guarantee in favour of Mazagon Dock Shipbuilders Limited, Mumbai from the list of Banks approved by SBI / Canara Bank published on MDL website.
- (iii) Non submission of PS with in stipulated time period may lead to cancellation of order by MDL at risk and cost of seller. In case cancellation of order is not opted by the buyer and seller has already commenced supply / services, MDL shall withhold 5% of order value from his bills in lieu of PS. In such case, interest is to be recovered for the period starting from 26th day of transmission / notification of order/contract by any mode and amount involved at the relevant rate of interest. For foreign supplier, the interest will be EUROBOR/LIBOR plus 2%. For Indian suppliers, the interest will be SBI BPLR plus 2%.
- (iv) In case of foreign bidders, the performance security must conform to Uniform Rules for Demand Guarantees (URDG 758) - an international convention regulating international securities.
- (v) The performance security will be forfeited and credited to MDL's account in the event of a breach of contract by the contractor. It will be refunded to the contractor without interest, after he duly performs and completes the contract in all respects including the warranty under the contract.
- (vi) Where the duration of contract is very long and banks are unwilling to issue BGs for long duration, rolling bank guarantee towards performance security can be submitted where it will be valid for at least one year with claim period of three months within which the same can be extended for further period by amendment.
- (vii) Performance security on reducing balance can be accepted when the contract period extends beyond one year. This will be effective on completion of one year and thereafter on six monthly / yearly basis.
- (viii) In the event of defects due to poor workmanship leading to non-performance of the Equipment/Item and bidder failure to attend the defects within a reasonable period of time, the PSBG will be encashed by MDL. MDL's decision in this regard shall be final and binding on the supplier / contractor.

Tender No. 170000541 (Nominated Limited Global Tender Enquiry)

(ix) In the event of postponing of delivery of deliverables/services or extension of guarantee desired & sought by MDL, the Performance Security (for 5% of order value) has to be extended and its amendment charges shall be borne by supplier.

7. **Warranty/Guarantee:** Warranty/Guarantee shall be as per TSP.

Note: Bidders have to quote for warranty /guarantee extension charges for one year beyond warranty clause mention in TSP for each yard in the price sheet attached with the tender. Bidder should note that these charges will not be considered for ranking purpose. Bidders shall not claim for warranty extension in case this clause is not being exercised.

8. **Currency of Bidding:**

- (a) Indian Bidders shall quote in Indian Rupees only.
- (b) Foreign Bidders are allowed to quote price (and get paid) in RBI's notified basket of foreign currencies - US Dollar or Euro or GBP etc.

9. **Pricing:**

- (a) **For Indian Bidders:** Prices of all items/services shall be quoted for delivery of the items/services to the following destination including charges towards inland transportation, inspection charges, insurance, custom duty & cess, and other local costs incidental to the delivery of the Goods/Services.

Items/services	Delivery Location at MDL / MDL Stores, Mumbai
----------------	---

- (b) **For Foreign Bidders:** Bidder shall quote the prices for the delivery on **Incoterm CIF, Mumbai/JNPT port basis** for delivery at MDL. Order will be placed on **CIF basis** only.
- (c) The prices quoted shall remain firm and fixed during the currency of the order / contract unless agreed otherwise by MDL.

10. **Taxes & Duties:**

- (i) Bidders must clearly mention the applicable Taxes in the rate sheet enclosed in the tender. The item-wise rates (i.e. Basic + Duties & Cess + Packing, Forwarding, inspection charges, Freight & Insurance) quoted in the Rate sheet should exclude Taxes. Bidder should indicate GST rates as applicable separately under each of the head in the same rate sheet, which will be paid extra based on tax invoice to the extent applicable.
- (ii) Foreign bidder shall submit Tax Residency Certificate (TRC) in Part-I offer. In case of remittances to Foreign Companies for services, as per the Income tax act and DTAA provisions, TDS shall be carried out from the amount payable towards services. As per the extant applicability and existing rates, following cases pertaining to TDS are presented for clarity:
 - a) Case 1 (TRC is made available by foreign bidders): Tax Deduction at Source (TDS) @ 15% of total service payment is applicable or as per applicable TDS rate stipulated by Government of India. If this is not agreed to by the bidder in the bid or during TNC / CNC, then this shall be appropriately loaded as per applicable rates on the price for the purpose of ranking. However, bidders to note that TDS rates / DTAA rates differ from country to country. It varies from 10% to 25%.
 - b) Case 2 (TRC is not made available by foreign bidders): Tax Deduction at Source (TDS) at the rates as mentioned in the table below is applicable. If this is not agreed to by the bidder in the bid or during TNC / CNC, then this shall be appropriately loaded as per applicable rates stipulated by Government of India on the price for the purpose of ranking. These rates are tentatively as under:

Service Payment slabs (converted in INR)	Rate of TDS applicable on total service payment
Up to Value of INR 1 Cr.	25.75%

Tender No. 170000541 (Nominated Limited Global Tender Enquiry)

Above INR 1 Cr upto INR 10 Cr.	26.26%
Above INR 10 Cr.	27.0375%

- (iii) Foreign Bidders shall quote their price on **Incoterm CIF, Mumbai** Basis. Taxes & duties as applicable to be borne by buyer & seller in their own country i.e MDL will bear the taxes & duties applicable within India and for outside India same will be borne by seller/bidder.
- (iv) **Goods and Services Tax (GST) – Applicable for Indian Bidder:**
- The prevailing rate of GST is to be indicated in your blank rate sheet in Part-I.
 - MDL's GST Number is **27AAACM8029J1ZA**.
 - Bidder/supplier shall comply as per GST act of India and responsible for the financial and non-financial consequences in case of non-compliance of GST provisions/requirements/timelines on their part.
- (v) End User Certificate if applicable. Format to be provided by vendor immediately after placement of order.

11. Payment Terms:

- On receipt of Invoice, 100 % of Payment shall be made within 15 days of receipt and acceptance of material and as reduced by any deductibles and / or the amount leviable towards liquidated damages, if any plus 100% taxes, duties etc. as applicable.
For Foreign Bidders: 100 % Payment made through LC for CIF Mumbai/JNPT port delivery against receipt of documents mentioned in payment mode.
If PSBG is not submitted, then the equivalent amount shall be retained
- Part Payment:** Part Supply, Part Payment shall be applicable.
- Extended Warranty (if applicable):** 100% payment for warranty wherever included in the same order will be admissible for payment will be made within 15 days from date of start of extended warranty period.
- Services:** 100% payment for all kinds of services wherever included in the same order will be admissible for payment **within 15 days** against certification by the designated acceptance authority after satisfactory completion of the respective activities/services and on receipt of invoice.

12. Payment Mode & Documents:

- All the payments to indigenous bidders due shall be made through Real Time Gross Settlement (RTGS) / National Electronic Fund Transfer (NEFT) by MDL.
 - All the payments to foreign bidders shall be through Letter of Credit/Direct Remittance through Bank.
 - MDL may opt to make due payment for items having shelf life, services or any miscellaneous payment required as per contract through Direct Remittance from Bank post-delivery & acceptance or completion of services.
Note: Invoices should be submitted at "Receipt Section" adjacent to the ARS Punching Section, South Yard MDL.
- (d) **Documents for LC Payments for Goods (Foreign Bidders):**
- Set of Original + 2 Copies of signed Invoice showing item-wise prices as per the order.
 - Set of Original + 2 Copies of signed packing List clearly showing list of items packed.
 - Set of Original + 2 Copies Clean on Board Bill of Lading OR Air Way Bill Made in the name of MDL's Bank and Marked as freight paid.
 - Set of Original + 2 Copies Certificate of approval OR Release Note from Inspection agency.
 - Certificate of country of origin in Original + 2 Copies by chamber of commerce.
 - Original + 2 Copies of Warranty/Guarantee Certificate as per contract/order.

Tender No. 170000541 (Nominated Limited Global Tender Enquiry)

- (vii) Original + 2 Copies of all Manufacturer's Test Certificates (MTCs) / Reports, Drawings, Manuals, Procedures etc. as relevant to the ordered item.
- (viii) Certificate Confirming that supplier has couriered / dispatched 4 set of Non Negotiable Documents comprising of all Test reports / MTCs, Technical Documents, Drawings, Manuals, Procedures etc. and of Signed Invoices, Packing Lists, Bill of Lading/AWB marked as Freight Paid, Insurance Policy/Document, Freight Paid Certificate, MDL nominated Inspection Agency's Certificate of approval, Country of Origin Certificate, Guarantee/Warranty Certificate, directly to MDL.
- (ix) Original + 2 Copies of the Certificate issued by the classified society confirming seaworthiness of the vessel and that the shipment is made on vessels of not more than 15 years vintage. (Applicable in case of CIF contracts / orders)
- (x) Certificate issued by MDL confirming that the delivery is made in time and no liquidated damages / penalty is applicable OR in case of delays, admissible amount of liquidated damages/ penalty will be specified by MDL in this certificate for reduction of equal amount from supplier's invoice and/or deduction of interest applicable towards non submission/delayed submission of PSBG and/or withholding the PSBG amount till guarantee/warranty period as applicable. (MDL will issue this certificate generally by E-Mail/FAX immediately on arrival of consignment at port of destination, receipt of signed copy of invoice, packing list, approval certificate of the nominated inspection agency, copies of B/L or AWB marked as Freight Paid, Insurance Policy/Document, Freight Paid Certificate or any other acceptable documents confirming dispatch on CIF basis).
- (xi) Certificate confirming that the shipping instructions (inclusive of packing)/Sea/Air worthiness packing have been followed while packing / shipment and forwarding of details for Freight and insurance to MDL.
- (xii) All the documents should clearly indicate the Purchaser's Order number, Import License Number, Airway Bill / Bill of Lading Number, Insurance Policy number/ Insurance Document reference number.

13. Consignee:

- (a) Material scheduled for delivery are to be delivered at MDL (Anik / Bond / Electronic store located in Mumbai)
Note:-In order to avoid inconvenience during the delivery of material, it is advisable for supplier to depute their representative in their own interest to coordinate the activities between the transporter, and MDL stores.
- (b) Following document should be submitted along with material:
 - PO copy & subsequent amendments issued to it, if any.
 - Delivery Challans clearly indicating MDL Purchase Order No, Inspection Note Details and Packing List co-relating the items in the inspection report.
 - Copy of Warranty Certificate, Preservation Certificate etc as applicable.
 - Technical documentation, if applicable.
- (c) Unloading of the equipment/ items will be arranged by MDL. Supplier is required to give 4 day's advance intimation to MDL clearly indicating approx. dimensions and weight of consignments for arranging fork lift/crane for unloading.

14. Inspection & Testing: It shall be as per TSP. Inspection agency DNV. Inspection charges to be borne by vendor/supplier

- (a) **Receipt Inspection:** MDL shall carry out necessary inspection of the items on receipt in the MDL on the basis of appropriate MDL Inspection system requirements & the Inspection documents submitted by suppliers. In case joint receipt inspection (JRI) is required to be carry out, same may be carried out along supplier's rep. Any objection raised by MDL inspection team against quality of material or workmanship shall be satisfactorily corrected by the supplier at his expenses including replacement as may be required within shortest possible time within 30 days. Items damaged during transit shall also be rectified or replaced by the supplier within shortest possible time.

Tender No. 170000541 (Nominated Limited Global Tender Enquiry)

- (b) **Rejection of the material:** Any portion of the equipment found defective/rejected, the supplier shall collect the same at his cost from the MDL Yard, all incidental charges being born by supplier, (inclusive of custom duty, if payable), within 30 days from the date of intimation to the supplier of such rejection. The MDL reserves the rights to dispose-off the rejected item at the end of a total period of 90 days in any manner, to the best advantage to the MDL & recover storage charges & any consequential damages, from sale proceeds of such disposal.

15.Loading Criteria:

Deviations sought by the bidder shall be loaded on the bidder/s quoted prices during price evaluation by MDL for ranking of bids to judge L1, as under.

- (a) Varied payment terms quoted by indigenous bidders as compared to the terms stated in the Tender document shall be normalized by adopting the Benchmark Prime Lending Rate of State Bank of India plus 2% thereon on the amount (s) at variation and / or for the period (in no. of days) at variation. For foreign bidders, LIBOR / EURIBOR rates plus 2 % or 6% whichever is higher would be applicable.
- (b) In case of Foreign bidders, L/C opening charges on CIF value, Interest for period of 20 days @ Benchmark Prime Lending Rate (BPLR) of SBI+2% on payment amount to be loaded if applicable for ranking purpose. In case of only foreign bidders quote this clause is not applicable.
- (c) If Service Component exists in an offer from a foreign vendor, then Tax Residency certificate (TRC) should be submitted with Part I offer. If no TRC is submitted, then the enhanced Income Tax rate and GST thereon will be considered while determining L-1.
- (d) For the additional delivery period sought by the bidder over the stipulated date of delivery as per Tender, 0.50% per completed week will be loaded to the quoted price.

16.Ranking of Bids: Tender line items are inseparable and non-divisible in nature.

- (a) Ranking of bids shall be done on total value wise by considering following factors:
- i. The comparison of the responsive tenders shall be on total outgo on Least Cost Net of Credit Basis (LCNC), for the procurement to be paid to the supplier or service provider, including all elements of costs, duties, levies, freight, insurance etc. excluding GST (where ITC is available). Therefore, it should normally be on the basis of CIF/ FOR destination basis, duly delivered, commissioned, as the case may be.
 - ii. The foreign bidders shall quote on Cost, Insurance & Freight (CIF) basis. They should also to indicate the custom tariff number and custom duty applicable in India. To arrive at the Free On Rail (FOR) destination cost over and above CIF cost the following charges to added / loaded:
 - a. Port Handling Charges: @ one per cent of consignment value excluding services.
 - b. Custom duty, cess and surcharges: @ Eleven per cent of consignment value excluding services
 - c. Clearing agency charges & Inland freight: @ one per cent of consignment value excluding services.
 - d. For bids with Letter of Credit (LC) payment, the likely LC charges (as ascertained from MDL's bankers) should also be added.
 - e. Interest for period of 30 days @ base rate of SBI BPLR plus 2% (As notified by HoD(F) of MDL on quarterly basis) on payment amount is to be considered while evaluating foreign bidders for ranking purpose.
 - iii. In case both Indian and foreign bidders have quoted in the tender, the comparison of the offers would be done on the basis of FOR destination including all applicable taxes and duties (Where Input Tax Credit (ITC) cannot be availed by MDL) on the principle of the total outgo from MDL's pockets.
 - iv. In case there are no domestic bidders, a comparison of offers can be made on the basis of CIF/landed costs since the rest of costs would be same for all bidders.

Tender No. 170000541 (Nominated Limited Global Tender Enquiry)

- v. The applicable loading towards deviations shall be loaded for ranking purpose.
- (b) For financial evaluation(Ranking), all bids shall be converted to Indian Rupees based on the "Bill for Collection (BC) selling "exchange rate on the last deadline for bid submission (Techno-commercial offer). If the last deadline for bid submission happens to be holiday or non-transaction day, the exchange rate on immediate previous working day will be adopted. The rate could be obtained from RBI/SBI rates as available on Internet.
- (c) Discount given, if any, by the bidders, after the last date for submission of the bids but before opening of the price bids, will not be considered for determining the ranking of bids but will be considered after the said bidder is adjudged as L1.
- (d) On-line ranking visible to the bidders after opening Part-II price bid is without loading parameters. However, the L1 bidder will be evaluated offline by applying all applicable loading parameters as per tender and clarifications during techno-commercial scrutiny / TNC meeting.
- (e) Loading/Ranking will be done on original submitted bid at the time of closing of tender. However, in case MDL invites supplementary price bid from technically qualified bidders, then same will also be considered while ranking of bids.

17. Public Procurement Policy (Preference to Make In India Order 2017 and MSE Order 2012): This is applicable for this tender and details are available on MDL Website. Kindly visit MDL website Link : <https://mazagondock.in/English/pages/Tenders> under tab Ship Building(SB)/MPV Project.

Note: All nominated vendors (Class I, Class-II and Non-Local) are eligible to bid for this tender.

18. Integrity Pact (IP): The Integrity pact essentially envisages the agreement between prospective vendors / bidders & buyers committing the person/officials of both the parties not to exercise any corrupt influence on any aspects of the contract. Only those vendors/bidders who enter into such an integrity pact with the buyer would be competent to participate in the bid. The format of integrity Pact is available on MDL's website, details are at enclosure. IP shall be submitted on plain paper.

The 'Integrity pact' dully filled as per enclosed format to be submitted along with the offer. Bidders to ensure that each page of Integrity pact shall be duly signed by the bidder. Non-submission of Integrity Pact by the bidders duly signed on each page along with Part-I bid is under liable for rejection. Bidders shall send original IP immediately to MDL post submission of bid.

Independent External Monitors (IEM): The following Independent External Monitors (IEMs) will have the power to access the entire project document and examine any complaints received by him. In case of any change in IEMs it will be informed accordingly. For any administrative enquires and clarification on tender, bidders shall contact Commercial Dealing Executive. In case of issues related to Integrity Pact (IP) please contact Independent External Monitor (IEM) whose details are as below:

Mr. P V Rao
Email id: pasupuletirao@yahoo.co.in

19. Option Clause: MDL the right to increase/decrease the ordered quantity by up to 50 % at any time, till final delivery date (or the extended delivery date of the contract), by giving reasonable notice even though the quantity ordered initially has been supplied in full before the last date of the delivery period (or the extended delivery period)

20. Book Examination Clause: In case it is found to the satisfaction of the BUYER that the seller has engaged an Agent or paid commission or influenced any person to obtain the

Tender No. 170000541 (Nominated Limited Global Tender Enquiry)

contract as described in clauses relating to Agents/Agency commission and penalty for use of undue influence, the seller, on a specific request of the buyer shall provide necessary information/Break-up data/ inspection of the relevant financial documents/information.

21. **Public Grievance Cell:** A public grievance cell headed by Shri R. R. Kumar, ED (EY) has been set up in the company. Members of public having complaints or grievances are advised to contact above Authorities on Wednesday between 10.00 hours and 12.30 hours in his office at 3rd Floor, West Block, Mazagon Dock Shipbuilders Ltd or send their complaints / grievances to him in writing for redressal. Telephone No. is 23762106(MDL).
22. **Breach of Obligation:** In case of breach of any obligation mentioned under, the bidder shall be disqualified / debarred from the bidding process for a period of one year from the date of notification;
- Bidder has withdrawn / modified / amended / impaired / derogated from the tender during the period of bid validity.
 - Bidder fails or refuses to execute the contract upon notification of acceptance of bid by MDL during the period of bid validity.
23. **Land Border:** This is applicable for this tender and details are available on MDL Website. Kindly visit MDL website Link : <https://mazagondock.in/English/pages/Tenders> under tab Ship Building(SB)/MPV Project.
24. **Right to Reject any or all Bids:** MDL reserves its right to accept or reject any or all Bids, abandon/ cancel the Tender process, and issue another tender for the same or similar Goods/Services at any time before the award of the contract. It would have no liability to the affected Bidder or Bidders or any obligation to inform the affected Bidder or Bidders of the grounds for such action(s).
25. **Additional Instructions:**
- Bidder shall abide to all tender terms & conditions including General Conditions of Contract (GCC).
 - In case of improper on-line filling or non-submission of Acceptance formats for Tender Enquiry Form (TEF), GCC, it shall be presumed that all our tender terms & conditions are acceptable to the bidder. For GCC, kindly visit MDL website Link : <https://mazagondock.in/English/pages/Tenders> under tab Ship Building(SB)/MPV Project.
26. **E-Portal and E-Tender Guidance:**
- Submission of bids against e-Tenders:** The bidder is required to quote online on the *e-Procurement* website www.eprocuremdl.nic.in by the deadline, by submitting the Techno-commercial Bid & Price Bid in Electronic format only. The prices/quotes & a few declarations shall have to be entered/uploaded by the bidder online in the Tender's entry forms & other bid documents' scanned/soft copies shall have to be uploaded as part of the bid. All bids should be digitally signed using DSC (as explained below).
 - To participate in e-Tender (s), every bidder must register themselves on the ASP's website (*registration is free of cost*) & must possess a legally valid Class-IIB or above Digital Signature Certificate (DSC) as per IT Act-2000, using which they can sign their electronic bids. The DSC can be procured from any Certifying Authority (CA) authorized by Controller of Certifying Authorities (CCA) of Govt. of India.
 - National Informatics Centre (NIC) have been appointed by MDL as the Application Service Provider (ASP).
 - Online User Manual is available on the website for the guidance of users & for participating in the e-Procurement/ e-Tendering, the bidder must ensure having the requisite (IT) infrastructure at their office premises.
 - For any further details of e tendering & digital signatures, please contact 0120-4001002, 0120-4001005, 0120-4711508, 0120-6277787, support-eproc@nic.in.

Tender No. 170000541 (Nominated Limited Global Tender Enquiry)

- f) Problems in hardware/software, internet connectivity, system configurations, Browser setting etc., for whatsoever reason shall not be considered for extension of tender closing date and time.
- g) MDL will not be responsible for an error in downloading of tender documents from web by the bidders. The version appearing on MDL website will be considered final and authentic.

27. **Contact Details for Queries: All bidders are requested to get their queries, if any, clarified in advance (i.e. 7 days in advance to tender closing date) to avoid last minute delay.** In case of any clarifications regarding tender, bidders are requested to contact the following executives.

Department	Name of Executives	Contact No	Email
Technical	Mr. Santosh Sitaraman DGM (SB-Design)	022 2376 3025	ssitaram@mazdock.com
	Mr. Pramod Kumar M(SB-D-E)	022 2376 3385	Pramodkumar@mazdock.com
Commercial	Mr. Satish Chandra CM/PE(C-P17A)	022 2376 2747	schandra@mazdock.com
	Mr. Bhuvnesh Kalwar DM (C-P17A)	022 2376 2738	bkalwar@mazdock.com

28. We look forward to receive your most competitive and reasonable offer against this tender.

Yours faithfully,

For MAZAGON DOCK SHIPBUILDERS LIMITED

Enclosure:

Enclosure-1	General Conditions of Contract (GCC) for Goods and Services
Enclosure-2	Performance Security (PS) Bank Guarantee Format
Enclosure-3	RTGS format
Enclosure-4	Details for remittance towards Performance Security (PS) Bank Guarantee Format
Enclosure-5	Contact Details of the bidder
Enclosure-6	Format for Compliance Certificate w.r.t. Land Border Clause
Enclosure-7	Integrity Pact
Enclosure-13-A	Format for declaration of Local Content & Purchase Preference as per PPP Order 2017. (Applicable for procurement below Rs 10 Cr)
Enclosure-13-B	Format for declaration of Local Content & Purchase Preference as per PPP Order 2017. (Applicable for procurement above Rs 10 Cr)
Enclosure-14-A	Format for declaration of Actual Local Content (Applicable for procurement below Rs 10 Cr)
Enclosure-14-B	Format for declaration of Actual Local Content (Applicable for procurement above Rs 10 Cr)

Note: All above enclosures are available on MDL Website. Kindly visit MDL website Link : <https://mazagondock.in/English/pages/Tenders> under tab Ship Building(SB)/MPV Project.



MAZAGON DOCK SHIPBUILDERS LIMITED

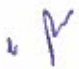


(A Govt. Of India Undertaking)
(Formerly Known as Mazagon Dock Limited)

SHIPBUILDING DESIGN ELECTRICAL & WEAPON
DOCKYARD ROAD, MUMBAI - 400 010

Technical Specification for Procurement of SHIPS ILLUMINATION AND DECK LIGHTING

PROJECT	:	7500 DWT Multi-Purpose Dry Cargo Vessel
YARD NO	:	MDL YD No.21001, 21002, 21003, 21004, 21005, 21006,21007,21008,21009 & 21010
CLIENT	:	NAVI MERCHANTS
DOCUMENT NO	:	DR / EL / MPV / 5015

REV. NO.	DATE	DESCRIPTION	AUTHORISED BY
00	07.03.2024	First issue	MDL

		
Pramod Kumar	S A SHINDE	P K MODAK
M (D-L)	CM (D-L)	DGM / HOS (D-L&Wn)
PREPARED BY	CHECKED BY	APPROVED BY



MAZAGON DOCK
SHIPBUILDERS LTD.,
(A Govt. Of India Undertaking)
Dockyard Road, Mumbai -400010

DESIGN ELECTRICAL	T.S.P. NO. REV. NO.	DR/EL/MPV/5015 0
YARD MDL - 21001, 21002, 21003, 21004, 21005, 21006, 21007, 21008, 21009 & 21010	DATE	07/03/2024
SHIPS ILLUMINATION AND DECK LIGHTING	PAGE	2 of 25

CONTENTS

SECTION I - GENERAL CONDITIONS AND REQUIREMENTS	4
1 SUBJECT	4
2 ENDURANCE:	4
3 CLASS, RULES, REGULATIONS & FLAG:	4
4 SHIP'S BASIC PARTICULARS:	6
5 SHIP'S SUPPORT SYSTEMS SUPPLIES:	6
6 VIBRATION:	7
7 NOISE LEVEL:	8
8 MANNING POLICY:	8
9 DOCUMENTATION	8
10 QUALITY ASSURANCE AND TESTING	10
11 TEST, TRIAL AND INSPECTION	10
12 SPARES	10
13 INSTALLATION & COMMISSIONING CONSUMABLES	11
14 SPACE CONSTRAINTS	11
15 INTERCHANGEABILITY	11
16 TALLY AND DIAGRAM PLATES	11
17 INSTRUCTION PLATES	11
18 PAINTING	11



**MAZAGON DOCK
SHIPBUILDERS LTD.,**
(A Govt. Of India Undertaking)
Dockyard Road, Mumbai -400010

**DESIGN
ELECTRICAL**

**YARD MDL - 21001, 21002,
21003, 21004, 21005 , 21006,
21007,21008,21009 & 21010**

**SHIPS ILLUMINATION
AND DECK LIGHTING**

T.S.P. NO.

REV. NO.

DATE

PAGE

DR/EL/MPV/5015

0

07/03/2024

3 of 25

19	LIFTING ARRANGEMENT	13
20	PRESERVATION / CONDITIONING	142
21	PACKING & SHIPPING	142
22	SECURITY OF INFORMATION	143
23	WARRANTY	143
24	PLANNED SHIP DELIVERY DETAILS(D)	13
25	WEIGHT RECORDING / WEIGHT CERTIFICATE	15
26	TECHNICAL ASSISTANCE	15
27	COMPLIANCE MATRIX AND DEVIATION	16
28	TECHNICAL OFFER AS PER SHIPYARD TENDER	16
29	SCOPE OF SUPPLY	15
	SECTION II TECHNICAL REQUIREMENT	17
	ANNEXURE NO.1- COMPLIANCE AND DEVIATION LIST	20
	ANNEXURE NO.2- WEIGHT CONTROL DATA SHEET	21
	ANNEXURE NO.3- WEIGHT CERTIFICATE	22
	ANNEXURE NO.4- CABLE SCHEDULE	23
	ANNEXURE NO.5- CABLE CONNECTION SCHEDULE	24



MAZAGON DOCK
SHIPBUILDERS LTD.,
(A Govt. Of India Undertaking)
Dockyard Road, Mumbai -400010

DESIGN ELECTRICAL	T.S.P. NO. REV. NO.	DR/EL/MPV/5015 0
YARD MDL - 21001, 21002, 21003, 21004, 21005, 21006, 21007, 21008, 21009 & 21010	DATE	07/03/2024
SHIPS ILLUMINATION AND DECK LIGHTING	PAGE	4 of 25

TABLE OF CONTENTS

SHIPS ILLUMINATION AND DECK LIGHTING

Section I - General Conditions And Requirements

1 **Subject:** The general conditions and requirements specified in this Section are intended to meet the functional requirements of the Equipment/ System elaborated in Section II and its associated auxiliaries/support systems; for meeting the overall requirements of the Vessel.

2 **Endurance:**
The endurance of the Vessel, at service speed of 11 knots, shall be about 5500 nautical miles.

3 **Class, Rules, Regulations & Flag:**

The Vessel will be registered under Danish flag and built under survey and in accordance with the rules of Classification Society of DNV

Classification Notations: \times 1A

Ship Type Notation: Multi-purpose Dry Cargo Ship

Additional Class Notations:

Structural strength and integrity: GRAB (2-20): Hold designed for loading/discharging by grabs.

Strengthened (IB) : Inner bottom strengthened for heavy cargo

Propulsion, Power Generation and auxiliary systems

E0 : Unattended Machinery Space

Battery (Safety) : EES installation in one EES space has a rated capacity of 1000kWh or above not having the Battery (Power) notation

Navigation notations : NAUT (AW)

Cargo operations notations:

LCS : Loading computer system

Equipment and design features notations:

DG (B) : Carriage of dangerous goods in bulk acc. SOLAS Reg. II-2/19

DG (P) : Carriage of dangerous goods in packaged form acc. SOLAS Reg. II-2/19

DBC : Carriage of solid dangerous goods in bulk acc. IMSBC Code

Container : Equipped for carriage of Containers

Cold climate notations : Ice 1B

Environmental and pollution notations:

BWM (T) : Ballast Water Treatment



**MAZAGON DOCK
SHIPBUILDERS LTD.,**
(A Govt. Of India Undertaking)
Dockyard Road, Mumbai -400010

DESIGN ELECTRICAL	T.S.P. NO. REV. NO.	DR/EL/MPV/5015 0
YARD MDL - 21001, 21002, 21003, 21004, 21005, 21006, 21007, 21008, 21009 & 21010	DATE	07/03/2024
SHIPS ILLUMINATION AND DECK LIGHTING	PAGE	5 of 25

Clean : Controlling and limiting operational emissions and Discharges ER (SCR) Installation of SCR System in Exhaust main engine

Recyclable : Inventory of hazardous materials

Survey arrangement notations:

BIS : In water survey

TMON (Oil lubricated) : Tail shaft monitoring (oil lubricated system)

Note: Final Class notations to be confirmed by Classification society. As per above class notations, firm shall comply following rules and regulation as applicable

3.1 RULES AND REGULATIONS

The Vessel, including its hull, machinery and equipment shall be constructed in accordance with guidelines, rules and regulations listed below and which are in force on the date of signing the contract.

3.2 GENERAL

1. Classification Society Rules for Multi-purpose vessel
2. Marine Laws and Regulations of Government of the Ship's Flag.

3.3 IMO CONVENTION

1. AFS, "International Convention on the Control of Harmful Anti-Fouling Systems on Ships, 2001";
2. BWM "International Convention for the Control and Management of Ships Ballast Water and Sediments, 2004" and IMO Res. A.868(20) and USCG regulations, "Guidelines for the Control and Management of Ships' Ballast Water to Minimize the Transfer of Harmful Organisms and Pathogens"
3. COLREG - Convention on International Regulations for Prevention of Collision at Sea, 1972 and amendments up to 2013.
4. SOLAS - International Convention for the Safety of Life at Sea 1974, or it's protocol of 1988 and up to amendments 2023 January.
5. ILLC - International Load Line convention, 1966/1988 and amendments up to 2014
6. MARPOL - International convention for the Prevention of Pollution from ships, 1973 and protocol of 1978, amendments up to 2022 January.
7. International Convention on tonnage measurement of Ship 1969. 4.2.3.

3.4 IMO CIRCULAR

1. IMO MSC/Circ. 1053 – "Explanatory Notes to the Standards for Ship Maneuverability"
2. IMO Resolution MSC.1/Circular.1353/Rev.2 (7 December 2020) "Revised guidelines for the preparation of the cargo securing manual"
3. MSC/Circular.891 – Guidelines for the On-Board Use and Application of Computers.

3.5 IMO RESOLUTION

1. Resolution MEPC.266(68) - Amendments to the Annex of the International Convention for the Prevention of Pollution from Ships, 1973, as modified by the Protocol of 1978 relating there to - (Adopted on 15 May 2015) - Amendments to regulation 12 of MARPOL Annex I
2. Resolution MEPC.203(62) – Regulations on energy efficiency for ships in MARPOL Annex VI
3. EEDI according to Chapter 4 of MARRPOL Annex VI, including verification according to IMO resolution MEPC.254(67) as amended
4. Resolution MEPC. 251(66) - Guidance for calculation of Energy Efficiency for Ships as per MARPOL, Annex VI (EEDI Calculation) and NOx technical file.



**MAZAGON DOCK
SHIPBUILDERS LTD.,**
(A Govt. Of India Undertaking)
Dockyard Road, Mumbai -400010

DESIGN ELECTRICAL	T.S.P. NO. REV. NO.	DR/EL/MPV/5015 0
YARD MDL - 21001, 21002, 21003, 21004, 21005, 21006, 21007, 21008, 21009 & 21010	DATE	07/03/2024
SHIPS ILLUMINATION AND DECK LIGHTING	PAGE	6 of 25

5. IMO Resolution A.962(23) - IMO Guidelines on Ship Recycling as amended by IMO Resolution A.980(24), or Ship Recycling Convention 2009, including complete inventory of hazardous materials (IHM) as per MEPC.269(68)
6. IMO Resolution MEPC.245(66) - "2014 Guidelines on the method of calculation of the attained Energy Efficiency Design Index (EEDI) for new ships"
7. Resolution MEPC.254(67) - 2014 Guidelines on Survey and Certification of the Energy Efficiency Design Index (EEDI)
8. IMO Resolution MEPC.282(70) - "2016 Guidelines for the Development of a Ship Energy Efficiency Management Plan (SEEMP)" and amendments (to be prepared by the Builder)
9. Resolution MEPC.107(49) - Oily Water Separator
10. MEPC.1/Circular.642 - 2008 - Revised Guidelines for Systems for Handling Oily Wastes in Machinery Spaces of Ships Incorporating Guidance Notes for an Integrated Bilge Water Treatment System (IBTS)
11. Resolution MEPC.227(64) - 2012 Guidelines on Implementation of Effluent Standards and Performance Tests for Sewage Treatment Plants - (Adopted on 5 October 2012)
12. Resolution MEPC.127(53) - Guidelines for Ballast Water Management and Development of Ballast Water Management
13. IMO Resolution A.1021(26) - Code on Alerts and Indicators, 2009 - (Adopted on 2 December 2009)
14. IMO Resolution MSC.215(82) - PSPC Performance Standard for Protective Coatings for dedicated seawater ballast tanks in all types of ships and double-side skin spaces of bulk carriers
15. IMO Resolution MSC.277(85) - Guidance for Application of Regulations in SOLAS to Ships which Occasionally Carry Dry Cargoes in Bulk and are not Determined as Bulk Carriers
16. Resolution MSC.137(76) - Standards for Ship Maneuverability - (adopted on 4 December 2002)
17. IMO Resolution A.813(19) - General Requirements for Electromagnetic Compatibility (EMC) for all Electrical and Electronic Ships Equipment - (Adopted on 23 November 1995)
18. IMO Resolution A.657(16) - Instructions for Action in Survival Craft - (Adopted on 19 October 1989)
19. IMO Resolution A.708(17) - Navigation Bridge Visibility and Functions - (Adopted on 6 November 1991)
20. Resolution A.952(23) - Graphical Symbols for Ship Board Fire Control Plan. (Adopted on 5th December 2003)
21. Resolution MSC. 128(75) - Performance Standards for a Bridge Navigational Watch Alarm System (BNWAS) - (Adopted on 20 May 2002)
22. Resolution MSC. 232(82) - Adoption of the Revised Performance Standards for Electronic Chart Display and Information Systems (ECDIS).
23. MSC/Circular.982 - Guidelines on Ergonomic Criteria for Bridge Equipment and Layout - (Adopted on 20 December 2000)
24. MSC. 90/28//Add. 1
25. Resolution MSC.263(84) - Revised Performance Standards and Functional Requirements for the Long-Range Identification and Tracking of Ships - (Adopted on 16 May 2008)
26. IMPA Recommendation for pilot ladder. MSC/Circular.568/Rev.1 - Pilot Transfer Arrangements - Required boarding arrangements for pilots - MSC/Circular.773 - Pilot Transfer Arrangements - Required boarding arrangements for pilots - (Adopted on 2 January 1997)
27. MSC/Circular.451 - Guidance Concerning the Location of Fire Control Plans for the Assistance of Shore Side Fire-Fighting Personnel - (Adopted on 24 September 1986)
28. Statutory Documents - IMO Publications and Documents - Circulars - Maritime Safety Committee - MSC/Circular.917 - Guidelines on Fire Safety Construction in Accommodation Areas - (4 June 1999)

3.6 IMO CODE

1. FSS Code - International Code for Fire Safety Systems
2. FTP Code - International Code for Application of Fire Test Procedures
3. LSA Code - International Life-saving Appliance Code



**MAZAGON DOCK
SHIPBUILDERS LTD.,**
(A Govt. Of India Undertaking)
Dockyard Road, Mumbai -400010

DESIGN ELECTRICAL	T.S.P. NO. REV. NO.	DR/EL/MPV/5015 0
YARD MDL - 21001, 21002, 21003, 21004, 21005, 21006, 21007, 21008, 21009 & 21010	DATE	07/03/2024
SHIPS ILLUMINATION AND DECK LIGHTING	PAGE	7 of 25

4. ISPS Code - International Code for the Security of Ships and of Port Facilities.
5. IS Code - International code on Intact Stability, 2008
6. Grain Code - International Code of Safe Carriage of Grain in Bulk
7. Noise Code - Code on noise levels on board ships, Resolution MSC.337(91)
8. IMSBC Code – International Maritime Solid Bulk Cargoes Code – Resolution MSC.268(85) (Italy bulk certificate)
9. Resolution A. 714(17) CSS Code - Code of Safe Practice for Cargo Stowage and Securing (as far as practicable).
10. IMDG Code – International Maritime Dangerous Goods Code

3.7 ISO STANDARDS

1. ISO 20283-5:2016 “Mechanical vibration, Measurement of vibration on ships – Part 5 - Guidelines for measurement, evaluation and reporting of vibration with regard to habitability on passenger and merchant ships”
2. ISO 8468 International Standard of Ship’s bridge layout and associated equipment
3. ISO 7547 – Air conditioning and ventilation of accommodation spaces on board ships
4. ISO 8861 – Engine-room ventilation in diesel-engine ships
5. ISO 484/1:1981- Ship building- Ship propellers-Manufacturing tolerances.
6. ISO 3046-2002-1 Reciprocating internal combustion engines — Performance
7. ISO 4406: 1999- Hydraulic fluid Power
8. ISO 4628:2003 – Paints and Varnishes
9. ISO 8217:2012 Fuel standard for Marine distillate fuels
10. ISO 8501- Preparation of steel substrates before application of paints and related products - Visual assessment of surface cleanliness
11. ISO 8862:1987 Air Conditioning and ventilation of Machinery Control-Rooms on board ships.
12. ISO 12944 Corrosion Protection of Steel Structures by Protective Paint System
13. ISO 15016:2015 Guidelines for the assessment of speed and power performance by analysis of speed trial data.
14. IEC 60092
15. IEC 60332-1:2004
16. IEC 60332-3:2000
17. IEC 60533
18. IEC 60754-1:1994
19. IEC 61000
20. IEC 61034-2 CORR 1:2006
21. IEC requirements for electrical installation for ships TC 18/2022 with amendments.

3.8 OTHER RULES, DIRECTIVES AND GUIDANCE NOTES

1. U.S.C.G. Rules and Regulations for foreign flag Vessels operating in navigable waters of the United States
2. International Telecommunications & Radio Conference Regulations 2012 (WCIT 12) and 2019 (WRC 19) with annexes and revisions.
3. International Tele-communication Union Radio Regulation
4. Danish Maritime Authority - Technical Regulation No.5 on noise measurements
5. IACS Rec 47 — Shipbuilding and Repair Quality Standard — rev.8 Oct.2017 and latest amendments
6. Maritime Labor Convention of 2006 (MLC 2006) except swimming pool & separation of deck & engine office
7. ILO Convention for all lifting appliances incl. engine lorry crane and lift – C152, Art 22 of ILO 152
8. ILO 152 Convention deals with all articles related to OSH
9. Kiel Canal Rules



**MAZAGON DOCK
SHIPBUILDERS LTD.,**
(A Govt. Of India Undertaking)
Dockyard Road, Mumbai -400010

DESIGN ELECTRICAL	T.S.P. NO. REV. NO.	DR/EL/MPV/5015 0
YARD MDL - 21001, 21002, 21003, 21004, 21005, 21006, 21007, 21008, 21009 & 21010	DATE	07/03/2024
SHIPS ILLUMINATION AND DECK LIGHTING	PAGE	8 of 25

10. Black Sea Rules as far as practicable
11. Panama Canal Navigation Rules including Tonnage Measurement as far as practicable
12. Suez Canal Navigation Rules including Tonnage Measurement
13. Notice B from Danish Maritime Authority (DMA)
14. GMDSS Global Maritime Distress and Safety System 1992 as amended.
15. Performance Standard for Ship borne Radio communications and Navigation Equipment
16. IACS No. 38 – Procedure for calculation and verification of the Energy Efficiency Design Index
17. Directive 2014/90/EU
18. EU directive 2005/33/EC

4 Ship's Basic Particulars:

Table 1

Dimensions:

Length overall	: 116.20	m
Length between perpendiculars	: 113.60	m
Breadth, moulded	: 17.50	m
Depth, moulded	: 9.80	m
Draught, moulded	: 6.50	m
Freeboard	: Type B	
Endurance	At service speed of 11 knots	5500 NM
Ship's displacement	Deep displacement	Around 7000 Tonnes

- 5 Ship's Support Systems Supplies: - Following ship's support supplies shall be available for the equipment system. For electrical supplies, in case of different requirements (voltage/frequency, etc.), the equipment supplier shall provide suitable provision (transformer/converter/UPS, etc.).

Table 2

S.N	SYSTEM	SUPPLIES	REMARKS
(a)	Compressed air system	For Engine Starting Air at 3.0 MPa at 50 cu m/hr and For Working Air at 0.7 MPa & 80 cu m/hr.	Specific provisions shall be provided by the equipment supplier.
(b)	Sea water cooling system	Sea water is available at .25MPa	
(c)	Fresh water system	Fresh water for equipment system shall be provided by ship's fresh water system at 0.5MPa.	Specific requirements to be indicated by equipment supplier.
(d)	Electrical	400 V AC @ 50 Hz, 3 phase 230 V AC @ 50 Hz, 3 or 1 phase.	Specific provisions shall be provided by the equipment supplier.

6 Vibration:

Special attention is to be paid in design and manufacture of the equipment to prevent undue vibration. Vibration limits, evaluation and measurement shall follow the provisions of ISO



MAZAGON DOCK
SHIPBUILDERS LTD.,
(A Govt. Of India Undertaking)
Dockyard Road, Mumbai -400010

DESIGN
ELECTRICAL
YARD MDL - 21001, 21002,
21003, 21004, 21005, 21006,
21007, 21008, 21009 & 21010
SHIPS ILLUMINATION
AND DECK LIGHTING

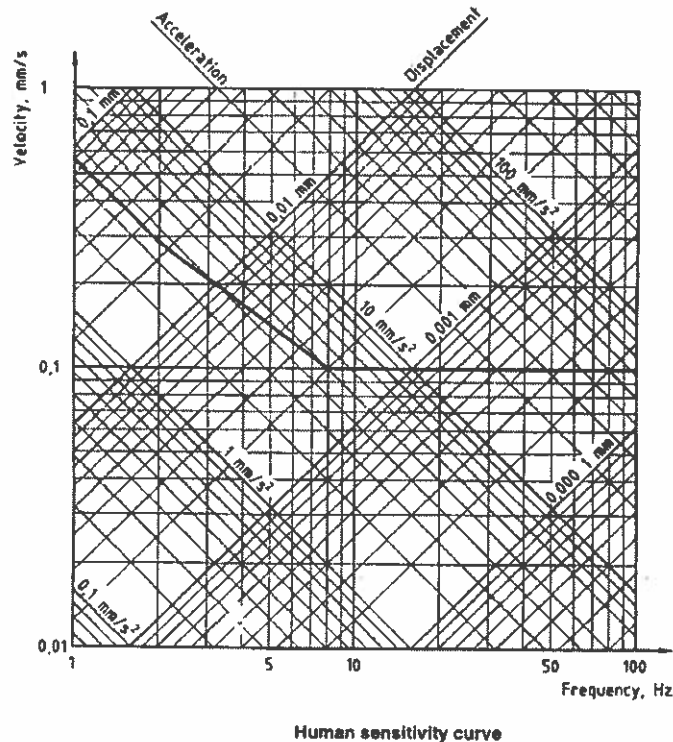
T.S.P. NO.
REV. NO.
DATE
PAGE

DR/EL/MPV/5015
0
07/03/2024
9 of 25

6954:2000, Mechanical Vibration – Guidelines for the measurement, reporting and evaluation of vibration with regard to habitability on passenger and merchant ships.

The values are expressed in terms of the overall frequency-weighted RMS acceleration (mm/s^2) and overall frequency weighted RMS velocity (mm/s) in the range 1 Hz to 80Hz. The overall frequency weighted RMS value of vibration velocity levels in the crew accommodation areas and service/working areas shall not exceed 6 mm/s and 8mm/s respectively. Vibration velocity limits are not applicable near equipment seatings.

The vibration measurement is to be made at sea trial condition and when the Vessel is running ahead steadily at the continuous service output of the main engine.



If Vibration level exceeds the limit of the above defined criteria, vendor to make necessary improvement to a practical extent. Vendor shall submit the vibration analysis (prediction) report for MDL's reference.

7 Noise Level:

Vendor shall ensure that the noise level for equipment in the accommodation space and engine room is to be within the limits specified in IMO.MSC 337(91), Code on Noise Level on board ships. In addition, vendor shall endeavour to achieve a noise level of max. 65dB for the equipment in the ECR.

Noise level measurement is to be carried out in the following conditions:

- i. During the sea trial when running ahead steadily continuous service output of the main engine with shaft generator at normal operating condition and all fans running.
- ii. During the sea trial when running ahead steadily continuous service output of the main engine and 1 generator running at normal operating condition and all fans running.



**MAZAGON DOCK
SHIPBUILDERS LTD.,**
(A Govt. Of India Undertaking)
Dockyard Road, Mumbai -400010

DESIGN ELECTRICAL	T.S.P. NO. REV. NO.	DR/EL/MPV/5015 0
YARD MDL - 21001, 21002, 21003, 21004, 21005, 21006, 21007, 21008, 21009 & 21010	DATE	07/03/2024
SHIPS ILLUMINATION AND DECK LIGHTING	PAGE	10 of 25

iii. Harbour mode with 1 generator running

iv. Harbour mode with emergency generator running

Measuring methods and points, measurement devices and reporting shall be in accordance with the Noise Code.

In case the measured noise level exceeds the above values, necessary improvements shall be made to a practical extent.

All engine room alarms shall be clearly audible above the noise of the running engine room machinery.

8 **Manning Policy:**

- The machinery spaces are envisaged for unmanned continuous operation. The spaces will be attended for starting/shutdown procedures and for routine checks.
- Controls and surveillance on board the ship will be through Remote controls.
- Each vital machinery shall be capable of control at the equipment level and from each specified remote control station.

9 **Documentation:** -

Various documents will be submitted by the equipment supplier as per the scope of supply and responsibility. Quality documentation is to be submitted in comprehensive and time bound manner for meeting ship's detailed design and production targets as well as equipment production and delivery schedule. Documentation to be submitted by the equipment supplier is broadly indicated below:-

Table 3

SN o.	Documentation	Remarks	Timeline (In Weeks)
(a)	i) Binding design documentation ii) (QAP) Quality Assurance Plan	i) For progressing with detailed design. ii) Equipment quality assurance during production	PO + 02
(b)	FATs procedure.	Equipment quality assurance during FATs.	PO + 06
(c)	Equipment STW/HATs/SATs documentation	For preparing installation inspection/Test and Trials documentation	PO + 12
(d)	Technical Manuals for equipment operation, maintenance, logistics, etc.	For ship's crew, training and repair organizations.	PO + 14

All documentation (including documents, drawings, data, reports, manuals, etc.) should be in English language. Dimensional details in the drawings should be as per scale. Technical data and parameters should be in metric units (SI Units). Orthographic drawings & 3D model of equipment (associated components), in soft copies are to be submitted. Following file/formats would be acceptable:-

- Documents, data & reports in MS-WORD / EXCEL/ PDF, as applicable
- ACCESS for data base files
- Orthographic drawings (2D) in .DXF / .DWG format.
- 3D model of equipment (associated components) in .STP/ .IGES format.

Note: Above drawings/data are to be submitted in soft copies in latest software version.



**MAZAGON DOCK
SHIPBUILDERS LTD.,**
(A Govt. Of India Undertaking)
Dockyard Road, Mumbai -400010

DESIGN ELECTRICAL	T.S.P. NO. REV. NO.	DR/EL/MPV/5015 0
YARD MDL - 21001, 21002, 21003, 21004, 21005 , 21006, 21007,21008,21009 & 21010	DATE	07/03/2024
SHIPS ILLUMINATION AND DECK LIGHTING	PAGE	11 of 25

Overall documentation must be of high quality in terms of contents, clarity and completeness; for meeting the requirements of detailed design, integration, manufacturing, quality assurance, installation, trials and operation/maintenance of the equipment.

All documents shall be sent electronically in PDF format without encryption and password. Printing of PDF provided by vendor shall be possible.

Vendor shall supply electronic copies (2 sets) of all finished plans and manuals to the MDL including Class approved drawings duly stamped together with associated Class approval letter without delay. All finished plans and manuals shall be in printable PDF format without password or encryption. All instruction books shall be provided in printable electronic format.

Vendor shall supply electronic copies (2 sets) and two (2) hard copy of drawings, manuals and instruction books for main and auxiliary machinery and all other major components such as motors, pumps, navigation & communication equipment, etc. to MDL. The instruction books from suppliers shall be provided only for the first Vessel if there are no change for the Vessel series.

One (1) hard copy of instruction books from suppliers to be provided in advance to Buyers site office.

The drawings and documents which need approval by the Classification society are to be submitted to the society directly by the Builder or Designer. In the event of any discrepancy between MDL and the Classification society or relevant authorities for approval drawings, the Classification society's or relevant authority's approval comments are to be in force and be adopted.

Approval by the Classification society and / or other regulatory authorities shall in no way be interpreted as approved by MDL, and MDL shall be entitled to make further requests provided they do not conflict with the requirements of specification of the PO.

Two (2) sets of instruction books and manuals of all equipment and systems to be furnished to MDL in electronic format (USB type storage device) in PDF or other agreed format; one each to the Vessels and to MDL. USB type storage device shall contain finished manuals and instruction booklets of all equipment as far as practical. Vendor is to supply two (2) hard copies of the finished drawings (as built) to MDL.

The Plans approved for the first Vessel shall be deemed to be approved for the subsequent Vessels of the series, except for any changes / modifications which shall be approved by the Buyers and the Classification society.

10 **Quality Assurance And Testing** : As per class requirement.

11 **Test, Trial and Inspection** :

Tests and trials shall be carried out, in general, according to the usual standard Engineering practice and normal international shipbuilding practice in the presence of the surveyor of the Classification Society and the Buyer's and the Builder's representatives.

The Supplier shall submit the procedure and schedule of test and trial for the Buyer's approval. All results to be recorded and presented to the Buyer.

Following notice to be given for tests and inspections in shipyard and outside shipyard:

- Two (2) working day for shipyard test and inspections in general



**MAZAGON DOCK
SHIPBUILDERS LTD.,**
(A Govt. Of India Undertaking)
Dockyard Road, Mumbai -400010

DESIGN ELECTRICAL	T.S.P. NO. REV. NO.	DR/EL/MPV/5015 0
YARD MDL - 21001, 21002, 21003, 21004, 21005 , 21006, 21007,21008,21009 & 21010	DATE	07/03/2024
SHIPS ILLUMINATION AND DECK LIGHTING	PAGE	12 of 25

- Four (4) working days for outside shipyard tests and inspections in country of shipyard
- Twenty five (25) days for outside shipyard tests and inspections in country other than the one of shipyard.
- Four (4) weeks for Factory Acceptance Tests

a. **Shop Test and Inspection**

Shop tests and / or inspection of machinery and equipment shall be carried out in accordance with the Builder's and / or Manufacturer's standard practice, except specially mentioned in Section II of this Specification.

Detailed description of shop tests except for minor equipment shall be referred to respective clauses of the Specification.

b. **FATs-(Factory Acceptance Trials) (Acceptance Test Procedure) ATP(QAP document)**

Documentation on equipment FATs procedure is to be submitted by equipment supplier in time bound manner, well in advance for approval by the designated inspection organization.

c. **Harbour Acceptance Trials/Sea Acceptance Trials: -**

During equipment setting to work and HATs/SATs, equipment suppliers shall assist and offer the respective equipment trials for successful completion of trials phase. Equipment testing, tuning and any defect rectification during on-board trials shall be undertaken by the equipment supplier in efficient and effective manner.

The HATs/SATs document is to be submitted by the supplier. HATs/SATs shall be carried out to the satisfaction of Inspection agencies.

12 **Spares:** - Spares, are to be recommended by equipment supplier, taking into account operational and maintenance requirements of the equipment. Equipment supplier shall submit comprehensive list of all types of spares & tools along with the technical offer. The list of spares to be supplied should comply with class requirements and those listed in Section II of this document.

13 **Installation & Commissioning Consumables:** -

a. **Installation Tool:** Special tools, jigs and fixtures & test equipment required for Installation, flushing, setting to work, testing & tuning, on-board trials (HATs/SATs) and post Sea Trials inspection of critical internal parts and reassembly of the equipment and its auxiliary systems shall be supplied.

b. **Commissioning Consumable:** The Commissioning consumables (first charge like coolants, greases, special oil, filters, gaskets, refrigerant etc.) shall be included in the scope of supply. Commissioning consumables shall be delivered before STW of the main equipment, tentative schedule of which shall be indicated in the Tender Enquiry.

14 **Space Constraints:** - While designing the equipment and its associated auxiliaries/components the supplier is required to take into consideration the space availability in the respective compartments of the ship, ease of operation/maintenance of the equipment on-board the ship, ergonomics aspects and safety. Maintenance envelopes for equipment and its auxiliaries/components shall be provided by the equipment supplier and assessed in consultation with the Shipyard/ owner for finalizing the layout of respective ship compartments. Optimisation in design is to be ensured while meeting the functional, maintainability and ergonomic requirements.

Limiting dimensions & weight of the equipment are to be indicated by the OEM.



MAZAGON DOCK
SHIPBUILDERS LTD.,
(A Govt. Of India Undertaking)
Dockyard Road, Mumbai -400010

DESIGN ELECTRICAL	T.S.P. NO. REV. NO.	DR/EL/MPV/5015 0
YARD MDL - 21001, 21002, 21003, 21004, 21005, 21006, 21007, 21008, 21009 & 21010	DATE	07/03/2024
SHIPS ILLUMINATION AND DECK LIGHTING	PAGE	13 of 25

Table - 4

≤	Length	Breadth	Height	Mass

OEM to comply with the limiting dimensions indicated in Table 4. Non-compliance of the said limiting dimensions shall be liable for rejection.

15 **Interchangeability:** - Equipment design is to ensure that components and parts having same dimensions and characteristics should be inter-changeable between different units of similar kind, without affecting the specified equipment performance.

16 **Tally and Diagram Plates:** - All major components, including fittings such as valves, cocks, levers, gauges, switches, etc., should be provided with suitable identification tallies for appropriate identification. Tally plates shall be in English language and in SI units. All tallies and diagrammatic plates shall be of anodised aluminium alloy. Tallies for safety, caution & warning considerations should be in bold black letters on a fluorescent orange background. Diagrammatic plates indicating details of connections are to be provided / affixed near the terminal box of the motor.

Additional details required are as follows:

- Danger labels in Red colour with white lettering are to be provided on all electrical equipment operating on 150Volts or higher
- The diagram plate, which is fixed on the rear side of the front door, shall have complete wiring diagram of the starter with sub-component identification number. The same identification number shall be engraved on the components fitted on the starter.
- Internal Cable-Cores terminating at the connection terminal strip shall have the same corresponding terminal ferrule no. Fixed / fitted on it.
- Tally of JB/Panel and other equipment internal diagram plate to be prepared by OEM.
- Cable Tallies as per approved system drawing to be prepared by OEM.
- Cable tallies should be supply for both the ends.

17 **Instruction Plates:** - Instruction plates listing the starting/shut-down procedure and precautions in brief are to be prominently displayed on the equipment. The Instruction plates are to be anodized (anodised aluminium alloy). Equipment is to be supplied with a set of instruction plates duly mounted on equipment or supplied loose.

18 **Painting:** - Standard painting procedure shall be applicable for suitability for marine environment. Colour scheme for painting the equipment shall be indicated subsequently/during TNC meeting.

19 **Lifting Arrangement:** - Equipment components weighing more than 40 kilograms are to be provided with eyebolts, for ease of handling/lifting on board the ship or ashore. During transportation/transit of equipment, adequate provisions (such as supports, locking arrangement, jacking, etc.) are to be made for preventing any damage to the equipment & its associated components. Any component requiring special handling shall be clearly marked and appropriate handling instructions shall be provided by equipment supplier. One set of lifting gear shall be supplied to MDL.



**MAZAGON DOCK
SHIPBUILDERS LTD.,**
(A Govt. Of India Undertaking)
Dockyard Road, Mumbai -400010

DESIGN	T.S.P. NO.	DR/EL/MPV/5015
ELECTRICAL	REV. NO.	0
YARD MDL - 21001, 21002, 21003, 21004, 21005, 21006, 21007, 21008, 21009 & 21010	DATE	07/03/2024
SHIPS ILLUMINATION AND DECK LIGHTING	PAGE	14 of 25

20 **Preservation / Conditioning:**

Equipment supplier is to provide high quality packing for the complete scope of supply along with handling arrangements. The package/container should display clear instructions for stowage, handling, care and accessibility for inspection of equipment preservation condition.

Equipment shall be supplied with Initial preservation for a period of 24 months for tropical conditions and protected against high humidity. The equipment is to be preserved on delivery as per the standard marine engineering practice. Closing plates/plugs/caps are to be provided on all openings.

Equipment supplier shall provide procedure & list of preservatives/consumables For re-preservation requirements, at shipyard or on board ship beyond initial preservation period.

21 **Packing & Shipping:**

All equipment shall be adequately packed and protected with supports to ensure adequate protection during all methods of transportation. Each unit within a package/container shall be clearly marked in English for identification. The container shall clearly indicate the commodity description with caution marks, weight, size, etc.

A separate document giving complete details & instruction for storage, preservation, handling & transportation after delivery shall be supplied & a copy must be included with the shipping document. The supplier should indicate the delivery schedule port of embarkation, transport, packing, preservation, insurance etc.

Following items shall be packed in separate containers/boxes with proper colour coding (with description) & list of their contents in English for their easy identification and traceability:

- Deliverables related to Main Equipment (to be marked in green colour).
- Deliverables related to Auxiliary Equipment (to be marked in green colour).
- Deliverables related to Installation material and Tools related to Main & Auxiliary Equipment (to be marked in green colour).
- Commissioning consumables and Tools (to be marked in green colour).
- Spares and Tools (to be marked in red colour).
- Documentation (to be marked in blue colour).

The list of actual deliverables against each of the above serials shall be forwarded to shipyards in soft copy (MS Excel format) with required part nos. within one week of finalization of PNC in order to detail them in the purchase order.

Packing list should give further breakup of items, wherever particular item is quantified by set.

- 22 **Security of Information:** - The information contained in this document is not to be divulged to any other firm/third party without the prior permission of MDL. Adequate measures are to be taken to ensure safe custody of this document.

23 **Warranty:**

The equipment along with associated auxiliaries/components shall be warranted by the equipment supplier for the stipulated performance for a period of twelve (12) months after planned delivery date (D) (Refer table 5.below) of the ship by MDL to the Owner.



MAZAGON DOCK
SHIPBUILDERS LTD.,
(A Govt. Of India Undertaking)
Dockyard Road, Mumbai -400010

DESIGN ELECTRICAL	T.S.P. NO. REV. NO.	DR/EL/MPV/5015 0
YARD MDL - 21001, 21002, 21003, 21004, 21005, 21006, 21007, 21008, 21009 & 21010	DATE	07/03/2024
SHIPS ILLUMINATION AND DECK LIGHTING	PAGE	15 of 25

During the said period, the equipment supplied shall be warranted against any malfunction, defects, material failure, and non-compliance to ordered specifications, sub-optimal performance, design deficiency, poor workmanship and quality. Any expense on account of equipment malfunction, repair or supply of spares against guarantee defects is to be borne by the equipment supplier. In case, warranty extension is required the same is to be catered for by the equipment supplier. If any defective part to be taken back to OEM's factory (i.e. importing and re-exporting from Country of origin), for service purpose the liability of the same shall be borne by the supplier.

Extension to Warranty: Supplier shall mandatorily indicate, in the offer, the annual rate for extended warranty period, along with the commercial terms and conditions if any.

The rates are to be indicated for the equipment in preserved state as well as for the equipment having been de-preserved and in operation.

24 **Planned Ship Delivery Details(D):** The planned dates for delivery of the Ships to the Owner by MDL is tabulated below:

Table 5:

Ship no.	Planned Delivery date
1	Apr 2026
2	June 2026
3	Aug 2026
4	Oct 2026
5	Dec 2026
6	Feb 2027
7	Oct 2028
8	Dec 2028
9	Dec 2028
10	Feb 2029

25 **Weight Recording / Weight Certificate:** - Weights of all components are to be recorded and a suitable certificate shall be submitted, by the equipment supplier. The designated inspection authorities shall countersign such certificates. Format for weight control data sheet, is placed at Annexure 2 of this document.

Net weight of each component is to be recorded in presence of designated inspection authority and the weight certificate is to be submitted by the equipment supplier, along with equipment supply. Format for weight certificate, is placed at Annexure 3 of this document.

26 **Technical Assistance:-**

The Supplier shall provide the necessary representative(s) to assist, **as and when required**, in carrying out inspection and supervise the work that is done on the equipment, during the following phases:

- Preparation for installation of equipment by shipyard.
- Monitoring of proper equipment preservation during storage.
- Setting to Work (including fitment of latest calibrated instrumentation).
- Assistance during Harbour trials (till clearance by Shipyard & Class)



**MAZAGON DOCK
SHIPBUILDERS LTD.,**
(A Govt. Of India Undertaking)
Dockyard Road, Mumbai -400010

DESIGN ELECTRICAL	T.S.P. NO. REV. NO.	DR/EL/MPV/5015 0
YARD MDL - 21001, 21002, 21003, 21004, 21005, 21006, 21007, 21008, 21009 & 21010	DATE	07/03/2024
SHIPS ILLUMINATION AND DECK LIGHTING	PAGE	16 of 25

- e. Assistance during Sea trials
- f. Assistance in trouble shooting / attending equipment operational problem till warrantee period
- g. Post CST equipment Inspections.

The supplier shall indicate total cost for executing all technical assistance activities mentioned above, in the price bid.

Shipyard has to progress on ship construction activities, simultaneously on ships of the same Class/Project or on ships of different projects. View this; there shall be every likelihood of clash of requirement of technical assistance. In such eventuality, in order to avoid delays on one ship due to similar work requirement on other ship, supplier shall depute their dedicated separate/independent team of supervisors/specialists for required technical assistance, on the required ships. Rotation of supervisors/specialist amongst the various ships/projects shall be avoided.

The supplier shall provide checklist for installation, setting to work, HATs & SATs to the shipyards to ensure the completeness of the activities by shipyards in order to avoid waiting period of the supplier specialists.

- 27 **Compliance Matrix and Deviation** : - Para-wise compliance matrix, including Para which are not applicable, as per the technical specifications (contained in this document) shall be submitted by the equipment supplier along with the technical offer, in the format at Annexure 1 (The technical offer received without Compliance Matrix shall be liable for rejection)
- 28 **Technical Offer as Per Shipyard Tender**: - Technical part of the offer with respect to the equipment and its associated auxiliaries/components/controls, to be submitted by the equipment supplier in comprehensive, systematic and structured manner, as per the requirements mentioned in this document, including the following (but not limited to):-
- i. Equipment description along with specifications.
 - ii. Equipment performance data
 - iii. Characteristics data, curves, efficiency, etc., related to equipment performance
 - iv. Outline general arrangement drawings of equipment with footprint, main dimensions, weights and mounting arrangement.
 - v. Associated support systems specifications and drawings.
 - vi. Interface requirements.
 - vii. Relevant drawings with all views and maintenance envelopes.
 - viii. Control and monitoring system along with complete list of sensors and instrumentation (in structured manner).
 - ix. Mounting data/details and characteristics along with minimum stiffness required for seating/foundation.
 - x. Associated electrical equipment specifications and drawings.
 - xi. Recommended list of spares, special tools, test equipment, etc., in systematic manner.
 - xii. Preliminary quality assurance and test plan.
 - xiii. Compliance matrix (Para-wise compliance to tender specifications).
 - xiv. Proposed plan for technical assistance for installation, preservation and commissioning, trials, etc.



MAZAGON DOCK
SHIPBUILDERS LTD.,
(A Govt. Of India Undertaking)
Dockyard Road, Mumbai -400010

DESIGN ELECTRICAL	T.S.P. NO. REV. NO.	DR/EL/MPV/5015 0
YARD MDL - 21001, 21002, 21003, 21004, 21005, 21006, 21007, 21008, 21009 & 21010	DATE	07/03/2024
SHIPS ILLUMINATION AND DECK LIGHTING	PAGE	17 of 25

- xv. List of items required for auxiliary systems (shipboard systems), which are essentially, be fitted for proper functioning of main equipment. Also indicate any of them, which are not supplied along with main equipment.
- xvi. List of Instrumentation & Diagram.
- xvii. Clear demarcation between the scope of supply of firm and that of the yard.
- xviii. Trial and commissioning time of complete system on board.
- xix. Delivery time from receipt of order.
- xx. List of special tools, instruments, jigs & fixtures & facilities required for lifting, transporting, aligning, installing and commissioning of main equipment and their auxiliaries.
- xxi. Details of all connections to plant, Mounting details with pattern no, seat details, flange details etc

29 SCOPE OF SUPPLY :

- i. Main equipment as detailed in Section II of this document.
- ii. All matching electrical connectors, plugs and sockets for supplied equipment, for assembly with ship's interconnecting cables. Cable glands of IP 68 rating should be as per EN 62444-2013 and are to be provided at the bottom of the panel. The body of the gland should be made of mild steel and nut of brass. The terminals used are to be approved type, adequately spaced & clearly marked for ease of connection & inspection. Suitable crimping type connectors of electrolytic copper and terminal clamps of Naval brass must be provided for termination of the permanent cables. They shall be delivered along with Main Equipment.
- iii. Deliverables related to Installation material and Tools required carrying out installation, alignment of Main and Auxiliary Equipment (shall be delivered along with Main Equipment).
- iv. Commissioning Spares and Tools (including special tools / instruments / gadgets required to conduct HATs and SATs) shall be delivered before STW of the Main and Auxiliary Equipment.
- v. Spares and Tools shall be made available before STW of the Main and Auxiliary Equipment.
- vi. Preservatives for all mounts shall be supplied along with the mountings.
- vii. Preservatives required for preservation of the equipment & items (shall be delivered along with Main Equipment).
- viii. Documentation in hard as well as soft copies shall be delivered along with Main Equipment for each ship set as detailed in the Para. 9 above.
- ix. **Communication cables** like CAT, optical fibre cables are to supplied by the vendor if required in design of the equipment.
- x. **Cable tallies** required by the system should be supplied along with main equipment for shipyard use as per class guidelines.
- xi. **UPS and batteries** along with enclosures should be supplied along with main equipment. , if required in the design of the equipment.
- xii. Provision for external alarms and other important indications should be catered as per class rules.
- xiii. Asbestos free construction certificates (Green Passport)
- xiv. Motors above 3 KW, as applicable, shall be procured only from ABB, Hoyer & Siemens.
- xv. Starters should be for reducing starting current of system. Starters should include protective devices for motors.

30 SCOPE OF OFFER-



**MAZAGON DOCK
SHIPBUILDERS LTD.,**
(A Govt. Of India Undertaking)
Dockyard Road, Mumbai -400010

DESIGN ELECTRICAL	T.S.P. NO. REV. NO.	DR/EL/MPV/5015 0
YARD MDL - 21001, 21002, 21003, 21004, 21005 , 21006, 21007,21008,21009 & 21010	DATE	07/03/2024
SHIPS ILLUMINATION AND DECK LIGHTING	PAGE	18 of 25

As a minimum, the following technical and design details applicable to equipment/item shall be submitted with the technical proposal:

- a) System Overview
- b) Proposed system configuration.
- c) System Description with block diagram, System components, System operation.
- d) System software (Software components, brief description of software and architecture), System start up, HMI functionality.
- e) Technical specifications of system.
- f) Description of Interfaces with other on board systems along with block diagram.
- g) List of cables, connectors, installation materials and accessories inclusive / not inclusive in the standard scope of supply.
- h) List of items required for installation and operation of the equipment and not supplied by the manufacturer.
- i) List of shock mounts and quantity supplied for each equipment.
- j) List of special tools, items required to carry out preservation at Yard
- k) List of recommended OBS.
- l) List of B&D.
- m) List of special Tools / instruments and test equipment required for On Board Maintenance.
- n) List of accessories inclusive / non-inclusive in the standard scope of supply.
- o) Clear demarcation between the scope of supply of firm and that of ship builder.
- p) Itemized price list of system components and other services offered.
- q) Delivery time from receipt of order.
- r) Indicative maintenance plan.
- s) Proposed training plan.
- t) Supply of complete binding data within three weeks of placements of order.
- u) Supply of Group SPTA set.
- v) Supply of Documentation.
- w) Proposal plan for Technical Assistance for System installation including STW, HATs and SATs.
- x) Proposed Factory Acceptance Tests.
- y) Reliability parameters.
- z) Proposed quality assurance and quality Inspection plan.
- aa) System Integration and interface Plan.
- bb) Schedule of delivery of prelaunch items (transducers, Gyro alignment plate etc), cable and other equipment to be decided during Preliminary Design Review meeting.
- cc) Sufficiency clause: All the deliverables supplied with the equipment shall be sufficient for the satisfactory operation of the system. If any additional item required thereafter for satisfactory operation of the system as described in the tender will be supplied by the firm with no cost implications.
- dd) OEM should organise supply of materials and deputation of their reps for connectorisation, installation, STW, HATs & SATs for ships being built at MDL concurrently without affecting the construction schedule of the ship.

PART B: Technical and Operating Requirements

1. Lighting System:



**MAZAGON DOCK
SHIPBUILDERS LTD.,**
(A Govt. Of India Undertaking)
Dockyard Road, Mumbai -400010

**DESIGN
ELECTRICAL**
YARD MDL - 21001, 21002,
21003, 21004, 21005 , 21006,
21007,21008,21009 & 21010
**SHIPS ILLUMINATION
AND DECK LIGHTING**

T.S.P. NO.
REV. NO.
DATE
PAGE

DR/EL/MPV/5015
0
07/03/2024
19 of 25

Mazagon Dock Shipbuilders Ltd., Mumbai is premier shipyard of India. The items projected in this specification are for use on 7500 DWT Multi-Purpose Dry Cargo Vessel. A total of 10 Ships are likely to be built. 230V, 1Ph, 50Hz, AC supply shall be used for general lighting and emergency lighting.

2. Scope of Supply:-

SHIP ILLUMINATION AND DECK LIGHTING:-

2.1 LED lights as per luminous level required by class rules shall be used for all lighting on board ship.

Sr. no.	Light Fitting Description	Qty	Unit
1	LED LIGHT FITTING FLUSH TYPE, 25W, IP 20	99	NOS
2	LED LIGHT FITTING SURFACE TYPE, 22W, IP55	80	NOS
3	LED LIGHT FITTING SURFACE TYPE, 22W, IP55, Explosion proof	5	NOS
4	LED LIGHT FITTING SURFACE TYPE, 22W, IP22	78	NOS
5	LED PENDENT LIGHT FITTING, 20W, IP55	62	NOS
6	WORKSHOP LIGHT FITTING WITH FLEXIBLE ARM & ON/OFF SWITCH, 15W	3	SET
7	LED FLOOD LIGHT 100W, IPN 22	4	NOS
8	LED PENDENT LIGHT FITTING, 20W, IP20	8	NOS
9	LED LIGHT FITTING, PENDANT TYPE, 20W, EXPLOSION PROOF	32	NOS
10	DESK LIGHT 8 W (STAND TYPE, W/SWITCH, PLUG & CABLE)	15	SET
11	LED FLOOD LIGHT FOR CARGO HOLD, 150W, EXPLOSION PROOF	12	NOS
12	LED FLOOD LIGHT 100W, IP55	24	NOS
13	LED BIRTH LIGHT, 8W, IP20	13	NOS
14	GOOSE NECK LIGHTS WITH DIMMING FACILITY	3	NOS
15	DOOR LIMIT SWITCH	1	NOS
16	MIRROR LIGHT, W/SOCKET, & ON/OFF SWITCH)	5	NOS
17	LED WALL LAMP, 12W, IP20	14	NOS
18	SEARCH LIGHT 1KW, IP55	1	NOS
19	SUEZ CANAL SEARCH LIGHT, 3KW, IP 55	1	NOS
20	CHART TABLE LIGHT, IP20	1	NOS
21	DAY LIGHT SIGNAL LIGHT, WITH CABLE, PLUG, PORTABLE TYPE	1	SET
22	JUNCTION BOX (WT)	59	NOS
23	JUNCTION BOX (NWT)	67	NOS

2.2. The following are the design considerations for the lux requirements as per rules/ Specification.

- Surface type LED fitting - 22W, 2500 lumen
- Flush type LED fitting - 25W, 3000 lumen
- Pendent type LED fitting- 20W, 2000 lumen
- Toilet module JB considered 60W

3. Technical Specification:



**MAZAGON DOCK
SHIPBUILDERS LTD.,**
(A Govt. Of India Undertaking)
Dockyard Road, Mumbai -400010

DESIGN ELECTRICAL	T.S.P. NO. REV. NO.	DR/EL/MPV/5015 0
YARD MDL - 21001, 21002, 21003, 21004, 21005 , 21006, 21007,21008,21009 & 21010	DATE	07/03/2024
SHIPS ILLUMINATION AND DECK LIGHTING	PAGE	20 of 25

- a. All the LED light fittings must be certified for compliance NABL or third party certified lab with relevant testing certificates.
- b. All the light fittings must be supplied complete with EMI/ EMC compliance certificates and must be certified as suitable for marine use.
- c. All LED Light source are to be of 6500K and having CRI > 80
- d. LEDs in the LED Module should be arranged in the array and in such a manner that failure of single LED does not affect the performance of the balance LEDs in the module
- e. Diagram of proposed light fittings along with polar chart and lux level should be forwarded along with the technical proposal
- f. A sample piece of the fittings along with drawing must be forwarded to MDSL for approval prior to manufacture. This sample if accepted will be merged as a part of inventory
- g. All fittings must be powder coated to colour shade to be define in drawing
- h. Manufacturers test report/ guarantee certificate to be supplied along with the equipment
- i. The firm should adhere to the standards created by the Illuminating Engineering Society of North America (IESNA) applicable for LED lighting
- j. The OEMs of LED luminaries should procure LEDs which are LM-80 certified (IESNA LM-80).
- k. The OEMs of LED luminaries should procure LEDs which are TM-21 certified (IESNA TM-21) for 50,000 hrs. Of operation up to 70% output maintenance.
- l. The firm should produce necessary certificates along with test results for LM-80 and TM-21 certified LEDS.
- m. All above light fittings should have provision for external earthing to hull.



**MAZAGON DOCK
SHIPBUILDERS LTD.,**
(A Govt. Of India Undertaking)
Dockyard Road, Mumbai -400010

**DESIGN
ELECTRICAL**
YARD MDL - 21001, 21002,
21003, 21004, 21005, 21006,
21007, 21008, 21009 & 21010
**SHIPS ILLUMINATION
AND DECK LIGHTING**

T.S.P. NO.

DR/EL/MPV/5015

REV. NO.

0

DATE

07/03/2024

PAGE

22 of 25

Annexure No.2- Weight Control Data Sheet

WEIGHT CONTROL DATA SHEET																			
EQUIPMENT DESCRIPTION	EQUIPMENT NO.																		
COMPARTMENT	LOCATION																		
SWBD:																			
<input type="checkbox"/> TOLERANCE CODE	<input type="checkbox"/> PRELIMINARY EST.	<input type="checkbox"/> DESIGN EST.	<input type="checkbox"/> M.T.O (CALC)																
<input type="checkbox"/> WEIGHED	<input type="checkbox"/> TOLERANCE ± %																		
1. WEIGHT (Kg.)																			
(a) DRY		Kg ±	%																
(b) FLUID		Kg ±	%																
(c) OPERATING		Kg ±	%																
(d) TEST		Kg ±	%																
(e) TOTAL		Kg ±	%																
2. EQUIPMENT DIMENSIONAL DATA (mm) & Co-ordinates of CoG																			
<p>PLAN</p> <p>ELEVATION</p>	<p>PLAN</p> <p>ELEVATION</p>	<p>PLAN</p> <p>ELEVATION</p>																	
<table border="1" style="width:100%; border-collapse: collapse;"> <thead> <tr> <th colspan="2">OVERALL SIZE</th> <th colspan="2">CENTRE OF GRAVITY</th> </tr> </thead> <tbody> <tr> <td>'A'</td> <td></td> <td>'X'</td> <td></td> </tr> <tr> <td>'B'</td> <td></td> <td>'Y'</td> <td></td> </tr> <tr> <td>'C'</td> <td></td> <td>'Z'</td> <td></td> </tr> </tbody> </table>		OVERALL SIZE		CENTRE OF GRAVITY		'A'		'X'		'B'		'Y'		'C'		'Z'			
OVERALL SIZE		CENTRE OF GRAVITY																	
'A'		'X'																	
'B'		'Y'																	
'C'		'Z'																	
<p>NOTE:</p> <ul style="list-style-type: none"> • ALL OFFERS SHALL INCLUDE THIS DATA SHEET DULY FILLED IN BY THE SUPPLIER (SIGNED, DATED & SEAL AFFIXED). • ALL FINISHED ITEMS SHALL BE WEIGHED & A CERTIFICATE SHALL BE PROVIDED AS PER ATTACHED SHEET. • SEPARATE SHEETS SHALL BE COMPLETED FOR EACH INSTALLED EQUIPMENT. • ORIGIN OF 'X', 'Y' AND 'Z' TO BE INDICATED. 																			
SUPPLIER'S SEAL		SUPPLIER'S SIGNATURE & DATE																	



MAZAGON DOCK
SHIPBUILDERS LTD.,
(A Govt. Of India Undertaking)
Dockyard Road, Mumbai -400010

DESIGN
ELECTRICAL
YARD MDL - 21001, 21002,
21003, 21004, 21005, 21006,
21007, 21008, 21009 & 21010
SHIPS ILLUMINATION
AND DECK LIGHTING

T.S.P. NO.	DR/EL/MPV/5015
REV. NO.	0
DATE	07/03/2024
PAGE	23 of 25

Annexure No.3- Weight Certificate

WEIGHT CERTIFICATE			
EQUIPMENT DESCRIPTION:		EQUIPMENT NO. :	
The form shall be completed by Supplier & shall be supplied along with the equipment.			
SUPPLIER'S NAME		Ref. Drg. No.	
ADDRESS		Part No.	
TELEPHONE NO.		EQPT. NO.	
ORDER NO.			
METHOD OF WEIGHING: Supplier shall prescribe Method & Equipment Used:			
	DATE OF LAST CALIBRATION	SPECIFIED REQUIREMENT	ACCURACY
	NOTE :-		
RESULT OF WEIGHING TOTAL EQUIPMENT DRY WEIGHT (Excluding packing, temporary protection etc.)			
ALLOCATED WEIGHT (Weight estimate agreed by purchaser and supplier based on order specs).			
REASONS FOR VARIATION BETWEEN ALLOCATED WEIGHT AND CERTIFIED WEIGHT:			
WEIGHING ADDRESS:	WITNESSED BY FOR SUPPLIER		FOR PURCHASER
	Representative		Representative
Date:	Signature / Date & Seal		Signature/Date & Seal

